

Your World First

C/M/S/

Law . Tax

Our Real Estate Capability at your Service

October 2018

Contents

<i>Introduction</i>	3
<i>Service tailored to your world</i>	4
<i>Real Estate at CMS</i>	5
Albania	6
Austria	7
Belgium	8
Bosnia and Herzegovina	9
Brazil	10
Bulgaria	11
Chile	12
China	13
Colombia	14
Croatia	15
Czech Republic	16
England and Wales	17
France	18
Germany	19
Hungary	20
Italy	21
Luxembourg	22
Mexico	23
Monaco	24
Montenegro	25
Morocco	26
The Netherlands	27
Peru	28
Poland	29
Portugal	30
Romania	31
Russia	32
Scotland	33
Serbia	34
Singapore	35
Slovakia	36
Slovenia	37
Spain	38
Switzerland	39
Turkey	40
Ukraine	41
United Arab Emirates	42
<i>CMS a global perspective</i>	44
<i>Client-focused thought leadership initiatives</i>	46

Introduction

We are over 800 qualified lawyers working in real estate and construction, spanning 41 countries and 67 cities. The CMS Real Estate and Construction practice is the largest real estate specialist team in Europe and one of the biggest worldwide.

Clients are at the heart of our business; we put you first.

Our emphasis is not just on being great technical lawyers but also on: understanding our clients and their business; you and what makes you special; building strong relationships with you; and bringing you our knowledge and experience.

We have been active in real estate in our markets for decades, so we understand the culture, the economic context, the local legal context and the history. Many of our colleagues have worked in-house or on secondments to clients to further develop their knowledge of the real estate sector. We know it inside out. That is why we are known for being strong on execution and providing concise, commercial and pragmatic advice.

Most of us focus full time on real estate and construction and serve a client base of developers, owners, occupiers, construction consortia, asset managers and investors, among others across all asset classes.

In January 2018 CMS France real estate team strengthened its Real Estate practice with the arrival of a recognised team of 13 lawyers from the Real Estate practice of the Paris office of Herbert Smith Freehills. This means CMS has the largest real estate teams across three major European jurisdictions – the UK, France and Germany – and is the largest real estate specialist team in Europe and one of the biggest worldwide.

We work efficiently both locally and internationally because we know each other: we meet face -to face, connect regularly, work on shared matters, train together and adhere to the same standards, templates and processes, including project management. That makes it easy to deploy multidisciplinary teams – including funds, construction, development, planning, corporate, banking, tax and insolvency specialists, or even notaries where it is allowed – with the simplicity of a single point of contact, even at multinational level.

You will find out more about the great things we do for our clients on the following pages of this guide. Feel free to get in touch with the local contacts for specific country requests and please do not hesitate to contact us if you have any questions or would like to receive more information.

Dirk Rodewoldt

Joint Head of the CMS Real Estate and Construction Practice
E dirk.rodewoldt@cms-hs.com

Arnout Scholten

Joint Head of the CMS Real Estate and Construction Practice
E arnout.scholten@cms-dsb.com

Service tailored to your world

Real Estate at CMS



 No.1 for Real Estate: Europe in The Lawyer Global 200 report 2017	 215 partners across our real estate sector	 41 countries
 6th largest law firm in the world	 EUR 15bn+ transacted for our clients in 2017	 >800 Real estate lawyers globally – representing the largest team in Europe
 No.1 for Real Estate: Europe in The Lawyer Global 50 report 2018	 73 offices	 #1 24 Band 1 rankings across the real estate sector categories in Chambers and Legal 500 globally



Albania

Facts and figures



Located in Tirana



1 real estate partner
and 2 lawyers



Languages: English, Italian
and Albanian

Contact us



CMS Tirana
T +355 4 430 2123
F +355 4 240 0737



Mirko Daidone
T +355 4 430 2123
E mirko.daidone@cms-aacs.com

Recent work highlights

Construction and development

- Advising the Municipality of Tirana on preparing and tendering the construction of a new public transport terminal under DBFOT concession contract with a value of approximately EUR 40m.
- Advising the Ministry of Infrastructure of the Republic of Kosovo during each and every pre-tender, tender and pre-construction phase of the Prishtine – Hani i Elezit Motorway Project (relating to a motorway of 60km in length), with a value of approximately EUR 600m.
- Advising Serenissima Costruzioni S.p.A. in relation to legal and tax matters for the construction of a EUR 40m Fier by-pass motorway of 22km in length, using the FIDIC conditions of contract for construction.

Investment and disposal

- Advising a major Italian energy trading company on its investments related to the construction and development of several hydropower plants in Albania under BOT concession contracts.

Financing

- Advising International Finance Corporation (IFC) on its financing and participation in an Albanian-based company which focuses on the construction and development of hydropower plant projects.
- Advising EBRD on the financing of UKT, the Albanian public water company, for a total value of over EUR 30m.

Austria

Recent work highlights

Planning and environmental

- Advising on construction and planning law issues in respect of the new project RWA Campus, a real estate development project in lower Austria.
- Assisting GLOBOPHARM Pharmazeutische Produktions- und Handelsgesellschaft mbH in connection with a new real estate development project in Vienna from construction and planning law aspects.
- Assisting Church Rectorate St. Karl Borromäus & Verein der Freunde und Gönner der Wiener Karlskirche in connection with construction, re-dedication and planning legal issues in respect of “Karlskirche Wien” and surrounding areas.

Construction and development

- Advising on various construction law matters in connection with the refurbishment and resettlement of the Austrian Parliament.
- Advising IES Immobilien Projektentwicklung GmbH on one of the biggest residential real estate development projects in Vienna.
- Advising the consortium and SPV of the three Austrian construction companies – Leyrer & Graf, Swietelsky and STRABAG – concerning claim management and construction-related matters.
- Advising on construction law matters in connection with the hospital project Krankenhaus Nord in Vienna.

Investment and disposal

- Advising an insurance company on the acquisition of a real estate project at the central railway station of Vienna.
- Purchase of the landmark office project “THE ICON VIENNA”, which is situated close to the new central station in Vienna.
- Advising a German investor regarding the forward purchase of an office building in Vienna.

Managers and occupiers

- Advising several international luxury brands regarding the establishment of flagship stores in Austria.
- Advising international hotel chains on several construction and lease law issues concerning its hotels in Vienna.
- Advising an international restaurant chain on an upscale project in the centre of Vienna.

Financing

- Advising the client as a consortium manager in the financing of the Campus, the new headquarters of Erste Group Bank AG.
- Advising the client on the construction financing of a five-star hotel in Vienna.
- Advising Erste Group Bank AG on the financing of a EUR 100m+ portfolio of shopping centres.
- Advising on the financing of the acquisition of Austria Campus.
- Advising Münchener Hypothekbank on the financing of a logistic centre.

Facts and figures



Located in Vienna



4 real estate partners
and 5 lawyers



Languages: German and English

Contact us

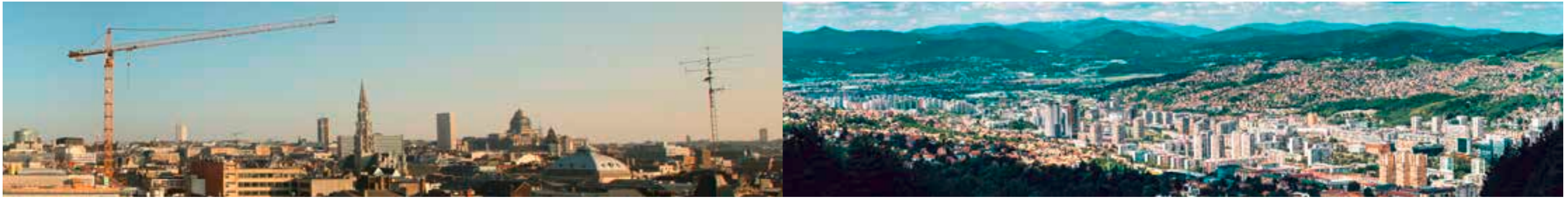


CMS Vienna
T +43 1 40443 0
F +43 1 40443 90000



Nikolaus Weselik
T +43 1 40443 2250
E nikolaus.weselik@cms-rrh.com

Johannes Hysek
T +43 1 40443 3250
E johannes.hysek@cms-rrh.com



Belgium

Facts and figures



Located in Brussels and Antwerp



5 real estate partners and counsels and 13 lawyers



Languages: Dutch, English, French

Contact us



CMS Brussels
T +32 2 74369 00
F +32 2 74369 01



Bruno Duquesne
T +32 2 74369 40
E bruno.duquesne@cms-db.com

Pierre-Axel Chabot
T +32 47 730 8345
E pierreaxel.chabot@cms-db.com

Recent work highlights

Planning and environmental

- Advising Klépierre on the extension of its Louvain-La-Neuve shopping mall.
- Advising a local authority on the conversion of a hospital site into residential accommodation.

Construction and development

- Advising Unibail Rodamco and the winning consortium on the EUR 550m redevelopment of the Heysel site (Project NEO) as a mixed use project comprising a shopping mall, 590 housing units, two day nurseries, 3,500m² offices, a retirement home, 112,000m² dedicated to indoor and outdoor leisure and 30 restaurants.
- Acting for Buro Happold in the context of a global study contract concerning the renovation by the Federal Building Agency of the “Residence Palace”, the future seat of the European Council.

Investment and disposal

- Advising Savills, Mora Bank and other funds on the acquisition and disposal of several office buildings in Brussels.
- Advising Fidentia Real Estate in the acquisition in the form of an asset deal of Besix’s head office in Brussels.
- Advising M&G Real Estate in the first transaction of its new long-term investment European fund (acquisition of the David Lloyd Brussels sports and leisure club from the UK group David Lloyd and lease-back via an emphyteotic lease).

Managers and occupiers

- Advising M&G Real Estate, Savills, Honeywell, CBRE Global Investors and other funds and private investors on asset management related matters.
- Acting for a number of occupiers (Amlin, AMP, Beline, Calzedonia, El Ganso, Elli Lilly, Hard Rock Café, Logica, Sergeant Major, Statoil, Siemens, to name a few) in the (re)negotiation of occupancy agreements.

Financing

- Assisting on the acquisition of the Square de Meeûs building by Hana Genii, a structure comprising two Korean investment funds with Korean institutional investors behind them. The Square de Meeûs building is a EUR 200m+ 38,000m² office building fully let to the European Parliament on a usufruct agreement.
- Advising Helaba on the EUR 130m financing of the “Covent Garden” office building by Hannover Leasing and a Chinese partner.
- Advising Société Générale in the EUR 380m acquisition by a Korean fund of the Belgian Ministry of Foreign Affairs, owned by Belgian REIT Cofinimmo since 2004. One of largest transactions in Brussels of 2018.
- Advising MünchenerHyp on the EUR 27m financing of the acquisition of the “South City” building by Real I.S.

Bosnia and Herzegovina

Recent work highlights

Construction and development

- Advising Dogs Trust (UK), the largest animal welfare charity and humane society in the United Kingdom, on real estate, corporate and regulatory matters regarding construction of the first rehoming centre.
- Advising PCC SE, leading German company in the Chemicals, Energy and Logistics sectors, on various matters regarding the construction of the first of three planned small hydro power plants.

Planning and environmental

- Advising European Energy A/S on real estate regulatory matters regarding using of the concession rights, and on building on private land in order to find the most suitable solution in accordance with the local laws and regulations as well as drafting and negotiation of the land lease agreement.
- Advising a prominent group of companies on the establishment of a JV (a renewable energy power plant) with a major steel producer in BiH (includes various regulatory and corporate advice) in connection with the building of renewable power plant.

Financing

- Advising the European Fund for Southeast Europe on several projects regarding loans to local banks as well as microcredit organizations.

- Acting for Kohlberg Kravis Roberts & Co. L.P. on several additional financing transactions for the group for which, inter alia, involved extensive advice on structuring and implementing the existing/creating new securities structures.
- Acting for the EBRD on numerous financings granted to local companies for the purpose of production facilities and premises expansion (acquisitions and construction).

Investment and disposal

- Advising a UK group of companies on planned expansion investments into Bosnia and Herzegovina through acquisition of major production facilities consisting of both real estate and movables assets.
- Advising Heta Asset Resolution AG on sale of real property as part of bankruptcy proceedings over the debtor.
- Advising a major financial institution regarding the sale of its real estate collateral.

Managers and occupiers

- Advising Hypo Alpe Adria Group regarding temporary management (including all general real estate matters) over one of the biggest shopping centres in Bosnia and Herzegovina based on the awarded custody as part of the enforcement procedure.

Facts and figures



Located in Sarajevo



11 team members



Languages: Bosnian, Croatian, Serbian, English, German, Slovenian and Swedish

Contact us



CMS Sarajevo
T +387 33 94 4600
F +387 33 94 4690



Nedžida Salihović-Whalen
T +387 33 94 4600
E nedzida.salihovic-whalen@cms-rrh.com



Brazil

Facts and figures



Located in Rio de Janeiro



1 real estate partner
and 1 lawyer



Languages: Portuguese, English,
French and Spanish

Contact us



CMS Rio de Janeiro
T +55 21 3722 9830



Ted Rhodes
T +55 21 3722 9831
E ted.rhodes@cms-cmno.com

Recent work highlights

- Advising Balmoral Offshore Engineering on the acquisition of land in the state of Espírito Santo, Brazil for the construction of a plant for the manufacture of buoyancy devices for the offshore oil and gas industry, as well as advising on environmental permitting requirements.
- Advising MRP International on its entry into the Brazilian market, including regulation of the Porto Maravilha urban redevelopment project in Rio de Janeiro, and on its joint venture with the Trump Organization for the high-profile Trump Towers Rio project, one of the largest commercial property developments in Latin America.
- Estee Lauder S.A. (Cela Cosméticos S.A.) on the construction, development, implementation, and permits for its new cosmetics distribution centre for Chile, Argentina, Brazil, and Peru.
- A German company on the acquisition of residential real estate in the state of Ceará, Brazil.
- Advising Modulex on planning permission requirements for changes to signage and monoliths at its client's industrial facilities in Brazil.
- Advising a German manufacturer on the transfer of a manufacturing facility in connection with the sale of its consumer hygiene products business.
- Advising Aviagen in conducting due diligence relating to agricultural premises to be acquired together with a Brazilian chicken business.

Bulgaria

Recent work highlights

Planning and environmental

- Successfully supporting M + W Group in preparation for their bid regarding the construction of the largest waste-to-energy facility in Bulgaria.
- Advising a client on real estate matters regarding the development of a shopping mall in the city of Sofia and on the first sale of an office building in Bulgaria.

Construction and development

- Kaolin AD, the Bulgarian subsidiary of the German natural resources company, Quarzwerke, on the agreement relating to the construction of a production unit.
- Swietelsky, a leading Austrian construction company, on issues related to the construction of railroad segments in Bulgaria.
- SEE Power Trading and its SPV on a real estate acquisition of a large land plot for the development of a residential project in Sofia.

Investment and disposal

- Europa Capital on the sale of Mall of Sofia, a 23,600m² shopping centre with 10,400m² of office space, to GTC.
- An international bank in relation to the sale by one of its affiliates of two office and residential projects in Sofia.
- Tishman International Management on the sale of its real estate office development.
- Austrian Private Equity Funds on the sale of the 75,000m² office building Megapark.

- A Bulgarian private client on the acquisition of 26 agricultural land plots for the development of a residential project.

Managers and occupiers

- Ocado Technology, the technology division of the British online supermarket Ocado, on a long-term lease agreement.
- An investor on the acquisition of a landmark building in downtown Sofia and its subsequent 15-year lease to a serviced office space provider.
- UCTAM Bulgaria on the negotiations of a long-term commercial lease agreement.
- An Austrian steel trader on drafting and negotiation of lease agreements in relation to logistic and storage premises.

Financing

- UniCredit Bank Austria on the restructuring of a real estate financing in Bulgaria.
- OTP Bank / DSK Bank on the refinancing of two shopping malls including structuring, due diligence, new finance documents, signing and closing.
- UniCredit S.p.A. / UniCredit Bulbank on the restructuring of a EUR 116m real estate financing, tax and corporate restructuring, debt deleveraging, new development, amendment and restatement of facilities agreement and new security package.

Facts and figures



Located in Sofia



2 real estate partners
and 9 lawyers



Languages: Bulgarian, English,
German, French, Hebrew
and Russian

Contact us



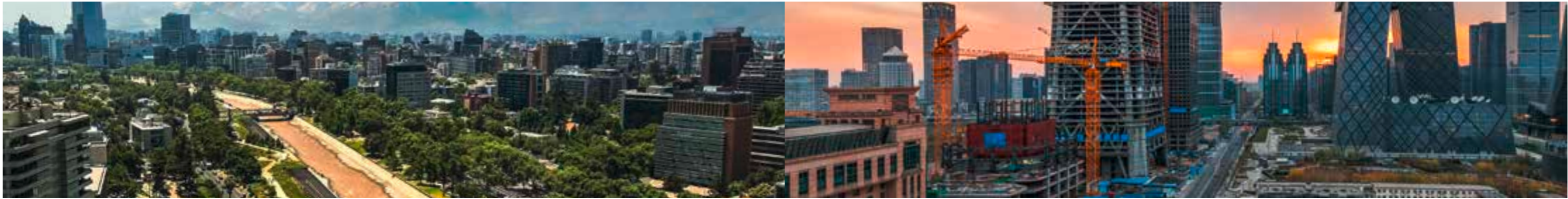
CMS Sofia
T +359 2 447 1350
F +359 2 447 1390

T +359 2 92199 10
F +359 2 92199 19



Antonia Kehayova
T +359 2 447 1322
E antonia.kehayova@cms-rrh.com

Jenia Dimitrova
T +359 2 92199 10
E jenia.dimitrova@cms-cmno.com



Chile

Facts and figures



Located in Santiago de Chile



1 real estate partner
and 3 lawyers



Languages: Spanish and English

Contact us



CMS Santiago de Chile
T +562 24852 000



Pabla Gaínza
T +562 24852 093
E pabla.gainza@cms-ca.com

Karin Muñoz
T +562 24852 093
E karin.munoz@cms-ca.com

Recent work highlights

- Advising Rezepka Inmobiliaria on the development of real estate projects, acquisitions, title investigations, procurement of building permits, drafting of the co-ownership regulation and the subsequent sale of various warehouse facilities, apartment buildings and office space.
- Advising Aki KB Minibogedas SpA on various self-storage centre projects and all matters regarding local permits for project construction.
- Advising Ferrocarril Antofagasta Bolivia, a subsidiary of Antofagasta Minerals.
- Advising on the regularisation and updating of their title deeds and of railway concessions, as well as on the reengineering of the use of railway grounds.
- Advising one of the top five non-banking financial products and services groups in Chile on private equity investment for real estate development projects.
- Advising Instituto Hebreo on land acquisition for the construction of the new Israelite school and stadium. Also provided general advice to the Israelite community in Santiago, in relation to real estate projects, temples, community centres and nursing homes.
- Advising IBF Capital on due diligence for a medical building facility, as well as the acquisition of a cemetery and analysing all special permits required for such projects.
- Advising IBF Energía Fondo de Inversión Privado on feasibility studies for various greenfield solar power projects.
- Advising Unilever on Chile's new environmental and zoning requirements regarding its industrial plants, buildings and water rights.

China

Recent work highlights

Planning and environmental

- Advising a German major wind tunnel engineering company on planning and engineering of a wind tunnel for a top-tier technical university in Shanghai.
- Advising a major German automotive supplier on the planning and development of an R&D centre in Shanghai.

Construction and development

- Advising a world-leading sports car maker on the construction of a driving experience centre in Shanghai.
- Advising a well-known supplier of equipment and services to packaging and label manufacturers on construction contracts for its plant in Changzhou.
- Advising an international group dedicated to the design, development and manufacture of metal automotive components on construction contracts for its plant in Kunshan.

Investment and disposal

- Advising a world-leading producer of fibre products on the acquisition of land use rights and construction of factory buildings in Hangzhou.
- Advising a major German machinery company on sales of the granted land use rights and factory buildings in Shanghai to a Chinese development company.
- Advising a leading hardware manufacturer headquartered in Germany on various real estate issues during the acquisition of an asset in China.

Managers and occupiers

- Advising a world-leading sports car maker on the build to lease structure for its dealer shops in China.
- Advising a global leading optics and opto-electronics manufacturer on the build-to-lease structure for its Chinese headquarters in Shanghai.
- Advising Virgin Atlantic Airways Limited on the negotiations and signing of a lease agreement with the landlord for its office space in Shanghai.

Financing

- Advising a global leading automotive components manufacturer on the construction and lease of a production base in Nanjing and on the project financing structure, including drafting of general contracting agreements and negotiations with major state-owned construction groups.
- Advising a leading German development company on project financing for investment in major manufacturing companies in China, including drafting of joint venture contracts, shareholders' loan agreements and security agreements, as well as assistance in negotiations.

Facts and figures



Located in Shanghai and Beijing



1 real estate partner
and 6 lawyers



Languages: Chinese, English,
German and French

Contact us



CMS Shanghai
T +86 21 6289 6363
F +86 21 6289 0731

CMS Beijing
T +86 10 8527 0259
F +86 10 8590 0831



Ulrike Glueck
T +86 21 6289 6363
E ulrike.glueck@cmslegal.cn

Nick Beckett
T +86 10 8527 0287
E nick.beckett@cms-cmno.com



Colombia

Facts and figures



Located in Bogotá



3 real estate partners
and 10 lawyers



Languages: English, Spanish
and French

Contact us



CMS Bogotá
T +57 1 321 8910



Juan Camilo Rodríguez
T +57 1 321 8910 x138
E juan.rodriguez@cms-ra.com

Daniel Rodríguez
T +57 1 321 8910 x118
E daniel.rodriguez@cms-ra.com

Jacques Simhon
T +57 1 321 8910 x118
E jacques.simhon@cms-ra.com

Recent work highlights

- Advising Plaza La Serrezuela on almost all legal aspects of construction of La Serrezuela and in every aspect of the project including its funding matters.
- Advising various landowners in the area Ciudad Lagos de Torca and the owners of the section of land with the best commercial potential and Universidad el Rosario. Through an alliance with Kapital Financial Services the Firm is designing the legal and financial structure required to obtain the optimal development of Clients' properties.
- Advising Círculo de Viajes Universal S.A. on the analysis of various real estate investment projects, including the purchase of 51% of one of the most luxurious spa centres in Bogotá, Colombia.
- Advising Cámara de Comercio de Bogotá, Corferias and FONTUR on the planning and structuring of a project to develop the International Convention Centre of Bogotá (Ágora), one of the most advanced convention centres in Latin America.
- Advising the National Government (Virgilio Barco Vargas National Real Estate Agency) on the renovation project of the National Administrative Center. This is one of the top five largest scale infrastructure projects in terms of investment on Bogota.
- Advising Monarca Luxury Towers on the acquisition of land and in the preparation of all contracts related to the construction of the project and is handling all contracts for the operation and occupation of the space.
- Advising Bastión Luxury Hotel in the development of a comprehensive reform of a trust agreement and performed a detailed study of the chain of title of the premises, owners, restrictions and liens on the real estates used in the development of this project.
- Advising Sala Logística de las Américas in the bidding process for the concession of the Convention Centre in Cartagena, together with Concreto and GHL. The Firm obtained a 10-year concession of the centre for the Client.
- Advising the investment vehicle of Banco de Chile conglomerate regarding the first investment made by one of its real estate private funds for the development of an important real estate project.

Croatia

Recent work highlights

Planning and environmental

- Advising Grupa Azoty S.A. in the intended acquisition of the Croatian leader in manufacturing agricultural fertilizers, by providing a thorough memo on the economical, regulatory, legal and environmental background relevant for the potential acquisition and full-blown due diligence, reviewing environment, real estate, corporate, commercial, material agreements, banking and finance, employment, and litigation matters.
- Advising Ecowind, a leading Austrian wind energy company, in the acquisition of two wind farm targets.

Construction and development

- Advising a client in business of world-class olive oil production, in the acquisition of agricultural property of significant size by covering a variety of issues, including reviews of contracts, agreements, project documentation, water and other permits.
- Advising Bauhaus in the one-stop-shop mode, with emphasis on real estate, contractions, transaction, employment and competition areas, including the client's expansion of retail premises and the purchase support for the additional property.

Investment and disposal

- Advising OTP Bank Hungary in the successful acquisition of Splitska banka d.d. – Croatian arm of Société Générale, with full-blown due diligence preceding the transaction,

- burdened with significant real estate matters arising from the OTP's extensive retail network and two business towers currently in development.
- Advising a client on the entrance on the social infrastructure market in Croatia by investing in an existing nursing facility, with due diligence of the target, and comprehensive transaction structuring phase.

Managers and occupiers

- Advising Commerzbank AG advising on the sale of the King Cross shopping centre in Zagreb, a first-generation shopping centre, located in a Zagreb district known for its retail and business facilities, with the tenants including impressive names from the retail sector.
- Advising Rockspring in their management of a real estate portfolio, including lease, construction and use of the real estate aspects.

Financing

- Advising the European Investment Bank with a loan granted for the expansion of the Dubrovnik Airport.
- Advising lenders in a fast-tracked re-financing of a Split-based, operational shopping centre, with the total value of the loan exceeding EUR 100m, after a comprehensive due diligence of the target, including corporate, real estate, material, lease, regulatory, compliance financing, employment, dispute and IP matters.

Facts and figures



Located in Zagreb



2 real estate partners
and 2 lawyers



Languages: Croatian, English
and German

Contact us



CMS Zagreb
T +385 1 4825 600
F +385 1 4825 601



Gregor Famira
T +385 1 4825 600
E gregor.famira@cms-rrh.com

Ana-Marija Skoko
T +385 1 4825 600
E ana-marija.skoko@bmslegal.hr



Czech Republic

Facts and figures



Located in Prague



2 real estate partners
and 13 lawyers



Languages: Czech, English
and German

Contact us



CMS Prague
T +420 2 96798 111
F +420 2 21098 000



Libor Prokeš
T +420 296 798 832
E libor.prokes@cms-cmno.com

Recent work highlights

Construction and development

- Advising Neturen, a Japanese company manufacturing components for the automotive industry, on a greenfield development in the Triangle industrial park located in Ústí nad Labem.

Investment and disposal

- Advising REICO on the acquisition of an office building in Prague.
- Advising Deko Immobilien on the acquisition of the prestigious site “The Park” in Prague. “The Park” is a state-of-the-art complex consisting of 12 office buildings built between 2003 and 2008 in an attractive campus-style formation. It was the largest ever office transaction in the Czech Republic.
- Advising Standard Life Aberdeen on the sale of Palác I.P. Pavlova 5, a multi-let office building located in central Prague.
- Advising Azora Europa on the sale of Galleries Louvre.
- Advising Pradera on the Czech and Polish aspects of a EUR 900m acquisition of IKEA portfolio.
- Advising Amundi on the acquisition of Praha city centre office building from Curzon Capital Partners III (CCP III), a core plus fund advised by Tristan Capital Partners.
- Advising Prologis on the sale of Ostrava Logistics Park, Moravia-Silesia, Czech Republic.

Managers and occupiers

- Advising multiple clients, including Deko Immobilien, Goodman, Redside and Standard Life Aberdeen, on leasing matters related to their property portfolio in the Czech Republic.

Financing

- Advising Raiffeisen Bank International on a successful financing, in connection with the cross-border acquisition of a logistics portfolio by the Czech head-quartered logistics giant, P3, from CA Immobilien Anlagen AG.
- Advising Bluehouse Capital on the (re)financing of its investment in Centrum Karviná s.r.o., which operates a shopping mall in Karviná, provided by Česká spořitelna, a.s.



England and Wales

Recent work highlights

Planning and environmental

- Acting for UK and EU multinationals on the sale of industrial facilities with historic contamination for redevelopment to sensitive uses (including provisions for the conduct of remediation).
- Advising Hammerson & Standard Life on the Brent Cross Cricklewood Opportunity Area, a major regeneration to deliver over 1.4 million sq ft of retail and leisure space, hotel, industrial uses and 7,500 new homes. This included the largest section 106 agreement in UK history.

Construction and development

- Advising Far East Consortium on one of the UK’s most ambitious housing-led regeneration projects. The Northern Gateway is a GBP 1bn development which will deliver over 10,000 homes in the North West of England.
- Advising Canada Pension Plan Investment Board (CPPIB) on its joint venture with Lendlease with an initial target to invest GBP 1.5bn in UK Build-to-Rent. The partnership began with an investment of approximately GBP 450m in the next phase of new PRS homes at Lendlease’s GBP 2.3bn Elephant Park development in Elephant & Castle.

Investment and disposal

- Advising Landsec on the GBP 1.28bn disposal of its joint venture interest holding 20 Fenchurch Street, London. This was the largest ever single building transaction in the UK.

- Advising Credit Suisse Asset Management as lead advisor to Hong Kong investor Cheung Kei Group on the GBP 410m purchase of 20 Canada Square, a landmark 12-story office building in London’s Canary Wharf business district.
- Advising AXA Investment Managers on the GBP 650m sale of Ropemaker Place, a 21 storey, 602,000 sq ft trophy City of London office development, to Singaporean investor, Ho Bee Land.
- We advised Brockton and Dunedin on the sale of three portfolios of light industrial property for GBP 559m.
- Advising Curlew Capital on their sale of a portfolio of 16 student accommodation blocks. The assets located in England, Wales, Scotland and Northern Ireland are valued in excess of GBP 520m.

Managers and occupiers

- Advising Google on the acquisition and on-going development of a 1 million sq ft new UK headquarters at the King’s Cross estate in London.
- Advising Snap on the letting of a prestigious West End office on a ten-year lease at 77 Shaftesbury Avenue, London.

Financing

- Advising Global Student Accommodation on its acquisition of the Spanish Nexo Residencias student accommodation portfolio, operating business and development sites funded with debt raised through a multi-tranche EUR 150m facility from debt funds.

Facts and figures



Located in London, Bristol,
Reading, Sheffield and Manchester



74 real estate partners
and 210 lawyers



Languages: English, French,
German and Spanish

Contact us



CMS London
T +44 20 7367 3000
F +44 20 7367 2000



Ciaran Carvalho
Partner
T +44 20 7524 6152
E ciaran.carvalho@cms-cmno.com

Pranai Karia
T +44 20 7367 2742
E pranai.karia@cms-cmno.com



France

Facts and figures



Located in Paris and in Lyon and Strasbourg



9 real estate partners and 40 lawyers



Languages: French, English, German

Contact us



CMS Paris
T +33 1 4738 5500



Christophe Blondeau
T +33 1 4738 4205
E christophe.blondeau@cms-fl.com

Aline Divo
T +33 1 4738 5695
E aline.divo@cms-fl.com

Pierre Popesco
T +33 1 4738 5771
E pierre.popesco@cms-fl.com

Recent work highlights

Investment and disposal

- Advising Amundi Immobilier on the sale of the Sirocco portfolio (part of the Aqua portfolio) to Ares through the sale of shares in Luxembourg based companies that owned buildings in Germany, the Netherlands, Finland and Austria.
- Advising WestInvest (Deka Group) on the acquisition of the 21,000m² “Metropolitan” office building located in the Paris from JP Morgan. The transaction was carried out by ways of a share deal with a valorization of the building of approximately EUR 250m.
- Advising UBS Real Estate GmbH for the acquisition of an office building located in Paris, including the analysis of the feasibility to carry out extension works, the due diligence process as well as the negotiation of the sales documentation.

Managers and occupiers

- Advising Société Générale on the drafting and negotiation of the commercial lease of an off-plan property for their new headquarters, covering the construction of a 30,000m² office building located in Paris suburbs.
- Advising Showroomprive.com on the drafting and negotiation of the commercial lease of an off-plan property for a 80,000m² warehouse the north of France (former Goodyear factory).

Construction and development

- Advising Migros in relation to the setting-up of a JV with Unibail-Rodamco-Westfield for the development of a leisure and shopping centre on a site located in France near the Swiss frontier, for a total provisional amount for the final project of EUR 323m.
- Advising Bouygues for the acquisition of an office building and its restructuring and redevelopment for a mixed use of office spaces and retails shops. Advice covered managing the planning issues: defining and obtaining all the administrative authorisations.

Planning and environmental

- Advising LBO France on the development project of a property land spreading over 300,000m² in the suburbs of Paris, involving the financing of the public equipment, the amendment of the town planning documents and the negotiation of a land agreement.

Financing

- Acting as legal adviser of a Dutch investment fund for the purposes of the acquisition of a French real estate investment fund (OPCI) and the refinancing of the financial debt of said fund, owning indirectly 11 properties dedicated to retail activities.

Germany

Recent work highlights

Investment and disposal

- Advising Alpha Industrial Holding on the sale of a logistics portfolio comprising 16 existing properties plus six development projects in Germany and Austria to Frasers Property with a total transaction volume of around EUR 600m.
- Advising Union Investment Real Estate on the acquisition of a shopping centre portfolio from Credit Suisse from the CS Euroreal closed fund consisting of the shopping centres Mercado (Nuremberg), Rathaus Galerie Leverkusen and Le Befane (Rimini) in a complex cross-border combined asset/share deal.

Managers and occupiers

- Advising Design Offices on the Germany-wide expansion and in this connection advice on the leasing of more than 50 conference and business centre locations throughout Germany.
- Advising ABN AMRO/Bethmann on relocating its headquarters to Frankfurt’s Marienforum (8,000m²). Advice includes all legal aspects and tax matters during the negotiations and conclusion of the lease.

Construction and development

- Advising EnBW Albatros on drafting, negotiating and signing the project contracts for construction of EnBW Albatross offshore wind farm in north sea.

- Advising Immofinanz during construction for the largest inner-city real estate project in Cologne, the so-called Friesenquartier with approximately 40,000m² of usable space (apartments, office, hotel).

Planning and environmental

- Advising the City of Frankfurt and its subsidiary DomRömer GmbH on reconstructing parts of Frankfurt Old Town, including all aspects of procurement and construction law from the beginning of the planning phase (construction costs about EUR 200m).
- Advising an International Industrial Group on successful defence against redevelopment order owing to previous operation of a waste recycling plant, several lawsuits and interim measures in various instances, highly complex legal and factual issues. Estimated redevelopment costs of approximately EUR 9m.

Financing

- Advising Event Group on the financing acquisition of 13 hotels from Holiday Inn in Germany and the Netherlands with a financing volume of EUR 530m. The transaction was one of the largest and most complex in the hotel sector in the year 2017.
- Advising Revcap on financing acquisition of the City Carré building in Magdeburg. The office building has a total rental area of some 135,000m² and incorporates a shopping mall. The purchase price is in the triple-digit million range.

Facts and figures



Located in Berlin, Cologne, Duesseldorf, Frankfurt, Hamburg, Leipzig, Munich and Stuttgart



31 real estate partners and 61 lawyers



Languages: German, Croatian, Czech, Dutch, English, French, Greek, Italian, Polish, Russian, Spanish and Swedish

Contact us



CMS Berlin
T +49 30 20360 0
F +49 30 20360 2000



Sebastian Orthmann
T +49 40 37630 354
E sebastian.orthmann@cms-hs.com

Dirk Rodewoldt
T +49 711 9764 163
E dirk.rodewoldt@cms-hs.com



Hungary

Facts and figures



Located in Budapest



2 real estate partners
and 7 lawyers



Languages: English, German
and Hungarian

Contact us



CMS Budapest
T +36 1 48348 00
F +36 1 48348 01



Gábor Czike
T +36 1 48348 19
E gabor.czike@cms-cmno.com

József Várady
T +36 1 48348 40
E jozsef.varady@cms-cmno.com

Recent work highlights

Planning and environmental

- Advising a multinational company on environmental law issues regarding soil contamination.

Construction and development

- Advising Becton Dickinson on the construct of a new manufacturing facility in Hungary which is scheduled to open in 2017.
- Advising Datalogic on the construction of a new factory in Balatonboglár, Hungary.
- Advising Goodman on the construction and “built-to-suit” letting of a 87,200m² greenfield logistics facility.

Investment and disposal

- Advising NEPI Rockcastle plc on its acquisition of the Arena Plaza, the second largest retail centre in Budapest.
- Advising Atenor on the sale of three buildings in the Vaci Greens campus in Budapest. The campus offers six buildings with a total of 120,000m² net of office space, three of which have been sold to date and a fourth is currently being built.
- Advising Union Investment on the sale of the 18,000m² office property Krisztina Palace in Budapest.
- Advising Trei Real Estate on a sale of a portfolio of 40 Spar leased supermarkets to Erste Asset Management, which Trei claims is the largest Hungarian retail portfolio transaction in 2017.

Managers and occupiers

- Advising Bedori Investment on the leasing of a new hotel development of MEININGER Hotels in Hungary.
- Advising Warehouse developers and managers on the acquisition and leasing of two sites and the leasing of several warehouse premises in Hungary.

Financing

- Advising Erste Bank Hungary on several high profile real estate financing transactions, including refinancing of the Spiral Office Building, GTC’s newest office complex development, Green House Office Building or Óbuda Gate, Office Garden as well as the financing of a property fund, Fashion Street and GTC – Renaissance Plaza.
- Advising Raiffeisen Bank on several high profile real estate financings, including the refinancing of Kempinski Hotel and Four Seasons, two five-star luxury hotels in Budapest.
- Advising OTP Bank on several high profile real estate financings in Hungary and across the region, including the financing and restructuring of a shopping mall in Varna.

Italy

Recent work highlights

Investment and disposal

- Advising Hirmer Group, a family-run company based in Munich, in the Italian aspects of the cross-border acquisition of Travel Charme Hotels & Resorts, one of Germany’s leading resort and holiday hotel chains. The transaction sees the Munich-based family-owned business extending its existing fashion and real estate portfolio to include hotels.
- Advising PGIM on the Italian part of the transfer of a global property portfolio managed on behalf of its client Bayerische Ärzteversorgung (BAV) to Deutsche Asset Management. The portfolio consists of 16 properties in ten countries across Europe, including England, Scotland, France, Italy, the Netherlands, Sweden and Finland, as well as the United States.
- Advising Union Investment in relation to the purchase for its “Unilmmo: Europa” fund of the shopping centre Le Befane in Rimini from Credit Suisse Asset Management Immobilien KAG mbH which acted for the account of the “CS EUROREAL” fund.
- Advising Aberdeen Asset Management Deutschland AG as advisor to Commerzbank AG, depositary bank of the “DEGI International” fund, in relation to the sale of an office building located in Rome purchased by Amundi Real Estate Italia SGR through the Nexus 1 fund.

Managers and occupiers

- Advising Deutsche Asset Management on several leases regarding a logistic facility in Northern Italy to different leading Italian transport and logistic companies.
- Advising Tristan in the restructuring and fit-out of an office building in Milan held by one of the property funds managed by Tristan. Assistance has included, drafting and negotiating the (i) construction agreement, (ii) consulting engineering and project agreement, (iii) consulting engineering and works director as well as safety coordination agreement, (iv) consulting engineering for fire prevention project agreement, (v) project management agreement and (vi) works responsible agreement.
- Assisted a major international hotel operator in connection with the operator selection process conducted by an institutional investor (primary insurance company) for new hotel in Rome city centre, resulting from a conversion of an office building and the full refurbishment of existing hotel.

Disputes

- Advising a private real estate and investment company specialising in logistic, retail and mixed use markets, in connection with the dispute originating from an aborted investment in two logistic facilities under development in Northern Italy (pre-contractual liability claim and counter claim).

Facts and figures



Located in Rome and Milan



4 real estate partners
and 6 lawyers



Languages: Italian, English
and German

Contact us



CMS Rome
T +39 06 4781 51
F +39 06 4837 55

CMS Milan
T +39 02 89283 800
F +39 02 4801 2914



Marco Casasole
CMS Rome
T +39 06 4781 51
E marco.casasole@cms-aacs.com

Dietmar Zischg
CMS Milan
T +39 02 89283 800
E dietmar.zischg@cms-aacs.com



Luxembourg

Facts and figures



Located in Luxembourg



2 real estate partners
and 15 lawyers



Languages: French, English,
German, Luxembourgish,
Portuguese and Spanish

Contact us



CMS Luxembourg

T +352 26 2753 1

F +352 26 2753 53



Julien Leclère

T +352 26 2753 28

E julien.leclere@cms-dblux.com

Vivian Walry

T +352 26 2753 21

E vivian.walry@cms-dblux.com

Recent work highlights

Construction and development

- Advising a company specialised in project management and construction consulting services to corporate clients regarding a litigation procedure related to so-called defects affecting one of the biggest buildings in Luxembourg, involving over 25 parties.

Investment and disposal

- Advising Allianz Real Estate regarding its acquisition of the landmark office project “THE ICON VIENNA” at Vienna’s new central railway station on behalf of several Allianz companies, which represents an investment of more than EUR 500m.
- Advising Ekistics Property Investors, a private equity investor based in London, on all legal aspects of the sale of Luxembourg-based real estate company EPIFC 6 S.à r.l. to UK real estate developer Mitsubishi Estate London as part of a share deal. EPIFC 6 holds an office building in Munich which comprises 22,000m² and is let to multiple tenants.
- Advising a Chinese development company ultimately owned by the Beijing Government regarding its EUR 236m acquisition of an office building located in London.

Managers and occupiers

- Advising a major supermarket chain regarding several commercial lease issues for its supermarkets in Luxembourg.

- Advising a landlord, a UK investment company, regarding real estate properties in Luxembourg (office buildings) including on leasing issues and on conflicts with tenants.

Financing

- Advising a major real estate investment company regarding a EUR 224m financing granted by a German bank with respect to the acquisition of a real estate property located in Frankfurt am Main, Germany and to fund the redevelopment of the property.
- Advising a group specialised in student accommodation projects regarding the acquisition and its financing of student housing properties in several cities in Spain, including Madrid and Barcelona.
- Advising a Chinese development company which is looking to refinance the acquisition of real estate properties located in London by obtaining external finance secured on the asset.
- Advising a German bank in relation to a financing of the acquisition of a property which is a mixed-use development purpose (retail/residential).
- Advising a real estate group regarding a EUR 59m real estate financing granted by a German bank with respect to the acquisition of a building in Germany.

Mexico

Recent work highlights

- Advising German investment fund on day- to-day leasing and administration of a real estate portfolio of six office buildings in Mexico.
- Advising German investment fund on the purchase of three office buildings with a value of over USD 500m and day-to-day leasing and administration of such office buildings in Mexico City.
- Advising joint venture between an industrial developer and institutional investors on the drafting and negotiation of multiple lease agreements for industrial multi- and single-tenant facilities.
- Advising wind power plant developer on the structuring, drafting and negotiation of the agreements necessary to lease, purchase and obtain land use rights for agrarian, public and private properties throughout Mexico, as well as obtaining the necessary permits and licences for the development of wind farms.
- Advising solar power plant developers on the structuring and negotiation of long-term lease agreements, usufructs, easements and purchase agreements for various solar power plant developers.
- Advising Mexico City government on the regularisation of seven transport hub properties owned by them for the development of mixed-use projects with over 1,000,000m² of commercial and office space.

Facts and figures



Located in Mexico City



2 real estate partners
and 5 lawyers



Languages: Spanish,
English and French.

Contact us



Mexico City

T +52 55 2623 0552



Enrique Lorente Ludlow

T +52 55 2623 0552

E elorente@wll.com.mx



Monaco

Facts and figures



Located in Monaco, Principality



1 real estate partner
and 2 lawyers



Languages: French and English

Contact us



CMS Monaco
T +377 97 98 42 24
F +377 97 98 42 25



Sophie Marquet
T +377 97 98 42 24
E sophie.marquet@cms-pcm.com

Recent work highlights

Construction and development

- Advising real estate promoters in assessing height restrictions to constructions.
- Advising promoters on acquiring and selling prior completion of new construction project.
- Acting for constructors and for owners in litigations.
- Advising foreign constructors on Monaco regulation.

Investment and disposal

- Advising investors on tax consequences relating to the acquisition of real estate in Monaco held by a foreign entity.
- Advising on the sale of a building to a promoter and negotiation of a sale back prior completion of construction.

Financing

- Advising banks in relation to financing major promotion projects in Monaco.
- Advising banks in relation to the forced execution of mortgages through the sale of real estate properties.

Planning and environmental

- Advising on the elaboration and drafting of the new thermal regulation for buildings.
- Advising promoters in connection with public and private heights regulations on construction projects in Monaco.
- Advising promoters on Monaco real estate urban regulation.
- Advising and acting for individual owners and professionals (architects, promoters) concerning planning permit issues in Monaco and nearby region.
- Acting against French urban development plans.

Managers and occupiers

- Advising luxury brands regarding the establishment of stores and negotiation of commercial leases in Monaco.
- Advising funds and private investors on asset management related matters.
- Acting for occupiers in the (re)negotiation of occupancy agreements.
- Litigating on commercial leases for landlords or tenants.
- Advising owners on co-ownership regulations and rules of approval.

Montenegro

Recent work highlights

Construction and development

- Advising GE Power in relation to their participation in the EPC project for the construction of thermal power plant in Montenegro Pljevlja II.
- Advising and representing the local companies of EVN in relation to high-value investment projects, particularly wastewater treatment plants and desalination plants, and related court and arbitration proceedings, involving the assessment of construction works performed, liability issues, etc.

Investment and disposal

- Advising Heta Asset Resolution AG on corporate and financial restructuring of the Austrian banking group in Serbia and Montenegro worth over EUR 100m.

Financing

- Advising OTP Group and Erste Group in relation to the project finance of a tourist resort in Montenegro.
- Advising the EBRD and the IFC on the refinancing of Delta mall acquisitions in Serbia, Montenegro and Macedonia.

Facts and figures



Located in Podgorica



2 real estate lawyers



Languages: Serbian, Bosnian, Montenegrin, English and French

Contact us



CMS Podgorica
T +382 20 4160 70
F +382 20 4160 71



Milica Popović
T +382 20 4160 70
E milica.popovic@cms-rrh.com



Morocco

Facts and figures



Located in Casablanca



1 real estate partner
and 15 lawyers



Languages: Arabic,
French and English

Contact us



CMS Casablanca
T +212 522 2286 86
F +212 522 4814 78



Marc Veuillot
T +212 522 2286 86
E marc.veuillot@cms-bfl.com

Recent work highlights

Planning and environmental

- Assisting the pharmaceutical group Afric-Phar in the creation and construction of an industrial pharmaceuticals business in Morocco, in particular regarding the planning and environmental aspects (investment: EUR 11m).

Construction and development

- Advising SOGEA in various aspects related to the structuring of their building construction sites in Morocco. In addition, we advised SOGEA during the course of a tax dispute related to the building up of the Renault Plant located in Tangiers. Due to our involvement and advice, the tax reassessment has been cancelled.
- Advising Keller on foreign exchange regulations for repatriations of profits derived from their construction activity in Morocco. We also assisted Keller in the defence of its interests within a tax audit conducted by the Moroccan tax administration. Furthermore, we have also advised this client on several occasions in its new construction projects in Morocco.

Investment and disposal

- Advising Bouygues Group in a construction and real estate project in Casablanca with the Anfa urbanization and development agency (Agence d'Urbanisation et de Développement d'Anfa), an affiliate of the public establishment "Caisse de Dépôt et de Gestion" (CDG).

- Advising the Mauritian hotel group Beachcomber in the selling of luxury villas and the management of a villa and golf resort in Marrakesh.
- Advising Banyan Tree (Asian luxury hotel group) on its acquisition of small hotels based in Morocco (EUR 50m).
- Tax advice and assistance to Qatari Diar on the negotiation of contracts with the Moroccan government concerning a USD 1.2bn real estate and tourism investment project.

Managers and occupiers

- Tax and legal assistance to Honeywell in real estate sale and commercial leaseback agreements consequently to share purchase agreements.
- Assistance to Pestana Grupo in its request for specific authorisation of a new form of touristic establishment: the first licence in Morocco for rental real estate intended for tourism (named under Moroccan law as "Résidence Immobilière de Promotion Touristique") was obtained by Pestana's Moroccan subsidiary.

Financing

- Assisting a major Moroccan investment fund in the development of a touristic project, including a shopping mall, a hotel and residences in Marrakech (investment: EUR 50m).
- Assisting Société des Bains de Mer in the partnership with a Moroccan company for a luxury tourism and leisure project in Marrakech.

The Netherlands

Recent work highlights

Planning and environmental

- Advised TRIUVA Kapitalverwaltungsgesellschaft GmbH on various zoning issues relating to the re-development of the office building 'The Oliphant' in Amsterdam South-East.
- Advised and represented the Municipality of IJsselstein on zoning and permitting for the (re) development of two shopping centres including litigating about the applicable zoning regulations and negotiations with third parties involved.
- Assisted McDonald's Nederland in relation to the relocation of a restaurant, including assistance with the application of an environmental permit for deviation from the applicable zoning plan and an environmental permit to build.

Construction and development

- Advised YOTEL on the lease and development agreement of a new 204 rooms hotel in Amsterdam.
- Advised Municipality of Amsterdam on the (re)development of Osdorp Centrum, one of the largest inner urban redevelopment project in the Netherlands.
- Advised TRIUVA on the acquisition and redevelopment of the multifunctional 'Geelvinck' building in the centre of Amsterdam.

Investment & disposal

- Advised Bouwfonds on the sale of its Car Parking Fund (Lux) which is composed of 17 garages in five European countries (UK, Germany, France, Netherlands, Spain).
- Advised Commerzbank on the disposal of the Green Campus in The Hague, a large office area which includes the KPN headquarters.
- Advised Capreon (the property firm formed by Noé Group) on the acquisition of the Haagsche Zwaan office building in the major business district of The Hague and the Lotus building in Rotterdam.

Managers and occupiers

- Advised PLUS supermarkets on all legal and fiscal aspects of the development of its new, fully automated distribution centre. It is the first fully automated distribution centre in the Netherlands.
- Advised retailer Primark on the refurbishment and lease of retail space for its new store in Utrecht with a total surface area of approximately 11,000m².

Financing

- Advised GreenOak Europe Secured Lending Holdings S.à r.l. on the financing of a real estate portfolio in the Netherlands.
- Advised Aspen Real Estate Investments B.V. in connection with the financing of an acquisition of eight office buildings sold by a joint venture between APF International and Ares Management.

Facts and figures



Located in Amsterdam
and in Utrecht



10 real estate partners
and 34 lawyers



Languages: Dutch, English,
French and German

Contact us



CMS Amsterdam
T +31 20 3016 301
F +31 20 3016 333



Arnout Scholten
T +31 20 3016 472
E arnout.scholten@cms-dsb.com

Hein van der Meer
T +31 20 301 62 27
E hein.vandermeer@cms-dsb.com



Peru

Facts and figures



Located in Lima



3 real estate partners
and 15 lawyers



Languages: Spanish and English

Contact us



CMS Peru
T +51 1 513 9430



Carolina Gajate
T +51 1 513 9430
E carolina.gajate@cms-grau.com

Raul Ravina
T +51 1 513 9430
E raul.ravina@cms-grau.com

Recent work highlights

- Advising Hipermercados Tottus on the development and viability of commercial projects on real estate properties, resulting on the investment of around USD 15m per year.
- Advising Sodimac Perú on the USD 490m purchase of Maestro Perú's 100% shares, its main competitor, in order to acquire more than 30 commercial premises.
- Assessing Open Plaza: (i) on the acquisition of three properties in Huancayo owned by over one hundred individuals, obtaining licenses for the construction and operation of the shopping centre with an investment of approximately USD 280m; and (ii) in the Due Diligence and acquisition of real estate properties valued in USD 5m, destined to the expansion of a Shopping Centre in Lima.
- Advising Grupo Brescia on the acquisition of a real estate property worth more than USD 17m, including the development of legal strategy and analysis of possible contingencies and a guarantee trust contract to secure such obligations.
- Assisting Grupo Caral on the remediation of its developed projects that in total sum more than one thousand housing units, as well as the legal advice in the negotiation and structuring of the purchase agreement regarding a property located in Lima.
- Advising Minera Las Bambas (subsidiary of MMG Ltd mining company) in the acquisition and land remediation of approximately 270 hectares for the Nueva Fuerabamba project, a world class copper mine located in the Peruvian Andes.
- Assisting Tahoe Resources Perú (subsidiary of Tahoe Resources Inc) in the legal and technical diagnosis of the real estate rights regarding La Arena and Shahuindo gold mine projects, which included registered legal duplicities and graphic overlaps, as well as the design of the most efficient land remediation strategy.
- Assisting Provías Nacional (Peruvian government agency in charge of the national road system) on a legal and technical advice for the acquisition and land remediation related to four (4) important road infrastructure projects across the country.
- Advising Enel Green Power Perú on the acquisition and land remediation for Peru's largest photovoltaic solar park "Rubi" and wind farm "Wayra I" located in Peruvian Andes and the Pacific Coast, designing strategies, conducting negotiations and the procedures to acquire easements for the construction and operation of the plants and power transmission lines.

Poland

Recent work highlights

Planning and environmental

- Advising a major Polish power company in connection with the legal aspects of the planning and development of a power plant.
- Providing comprehensive legal advice to Chevron on numerous legal issues regarding prospecting and surveying for shale gas deposits.

Construction and development

- Advising the general contractor of the National Stadium – a consortium comprising Alpine Construction Polska, Alpine Bau Deutschland AG, Alpine Bau GmbH, Hydrobudowa Polska S.A. and PBG S.A. – in connection with the construction aspects of the National Stadium.
- Advising the general contractor Torpol/Astaldi on the construction of the Nowa Łódź Fabryczna train station.

Investment and disposal

- Advising Pradera on the Czech and Polish aspects of a EUR 900m acquisition of an IKEA portfolio.
- Advising REICO on the EUR 116m purchase of the Proximo I office building in Warsaw.
- Advising Futureal on the EUR 90m sale of NOVA PARK shopping centre.

Managers and occupiers

- Advising Segro group in Poland on the complex leasing agenda relating to all of Segro's warehouse premises in Poland (both existing and built-to-suit).
- Advising Pramerica Real Estate International on the re-development and re-leasing of the K1 office building in Kraków (formerly Cracovia Business Centre).

Financing

- Advising Deutsche Pfandbriefbank and Landesbank Hessen-Thüringen Girozentrale on the EUR 288m financing of a portfolio of logistics centres located across Europe (Poland, Germany, Belgium, Czech Republic and the Netherlands) owned by a joint venture of SEGRO plc and PSP Investments.
- Advising Deutsche Pfandbriefbank, Helaba and ING on a EUR 200m re-financing of an acquisition of four shopping centres in Poland bought by Rockcastle.

Facts and figures



Located in Warsaw and Poznań



4 real estate partners
and 31 lawyers



Languages: Polish, English,
Russian and German

Contact us



CMS Warsaw
T +48 22 520 5555
F +48 22 520 5556



Wojciech Koczara
T +48 22 520 8320
E wojciech.koczara@cms-cmno.com

Lidia Dziurzyńska-Leipert
T +48 22 520 5659
E lidia.dziurzynska-leipert@cms-cmno.com

Katarzyna Dębińska
T +48 22 520 83 37
E katarzyna.debinska@cms-cmno.com



Portugal

Facts and figures



Located in Lisbon



1 real estate partner,
3 lawyers and 1 solicitor



Languages: English, Portuguese
and Spanish

Contact us



CMS Lisbon
T +351 21 09581 00
F +351 21 09581 55



Luis Abreu Coutinho
T +351 21 09581 00
E luis.coutinho@cms-rpa.com

Salvador Pires Marques
T +351 21 09581 00
E salvador.marques@cms-rpa.com

Cristina Gouveia de Carvalho
T +351 21 09581 00
E cristina.carvalho@cms-rpa.com

Recent work highlights

Planning and environmental

- Advising Swedwood on all legal issues regarding the installation and expansion of the factory's group, including planning, allotment licensing, prior information notices, authorisation requests for installation and use authorisations.
- Advising the owners of a property with unique environmental heritage, architectural interest and natural resources (located in the Serra da Estrela Natural Park and in the Natura 2000 network) in litigation against Portugal's Ministry of Environment, the Municipality of Covilhã and the municipal water agency (ICOVI).

Construction and development

- Advised in the projects, planning and licensing for the construction of the Inter IKEA Centre Portugal, S.A. – Mar Shopping and the IKEA Matosinhos store.

Investment and disposal

- Advising M&G Real Estate in relation to the acquisition and lease back of 12 hypermarket and supermarket assets located in strategic locations across Portugal from Sonae RP for EUR 164m.
- Advising the fund Belas Artes Reabilitação Urbana – Fundo de Investimento Imobiliário Fechado on the sale of a major building located in a prime area of Lisbon to a pension fund held by the Bank of Portugal. The scope of the work included a legal due diligence and the negotiation and drafting of

all relevant contracts, including the public deed.

Managers and occupiers

- Advising Cobega Group through its Portuguese subsidiary Daufood Portugal, which entered into a master franchise agreement with US company Domino's Pizza Inc, in order to be responsible for developing such business in Portuguese territory. Our role includes advising in all the leasing agreements signed in order to implement the stores.
- Advising a major private equity group on the acquisition of several touristic resorts, including conducting real estate legal due diligence and advising on all legal issues regarding the subsequent operation and management of such resorts.

Financing

- Advising BPI VII on the acquisition process of 100% of the share capital of Dolce Vita Tejo (the entity which owns Dolce Vita Tejo Shopping Centre) and the existing credit facility among ING Belgium, SA/NV (as lender) and Dolce Vita Tejo-Investimento Imobiliário S.A. (as borrower), with the nominal amount of EUR 169.9m.
- Advising VINCI on real estate legal due diligence, which led to securing the EUR 3bn public tender for the acquisition of ANA Aeroportos (the public company responsible for the management of all airports located in Portuguese territory).

Romania

Recent work highlights

Planning and environmental

- Advising Tishman Asset Management on the sale of a closed chemical factory in Turda, Romania, including advice on the regulatory framework regarding site conversion, and environmental obligations in case of a share transfer and business transfer, as well as the liability of shareholders and directors as regards environmental matters.

Construction and development

- Continuing to advise Infra Red Capital on the development of the Expo Market Doraly shopping centre near Bucharest. Work involves extensive due diligence on various plots of land for multiple extensions of the centre, title insurance as well as assistance regarding permitting, drafting and negotiating sale purchase agreements and supporting documentation.

Investment and disposal

- Advising Aberdeen Asset Management and Commerzbank AG on the sale of its 9,400m² Construdava office building in Bucharest to Adam America Real Estate.
- Advising AGI Hera on sell-side in the sale of industrial (logistics) property of over 100,000m² land and warehouse near Bucharest, including negotiation and drafting of all documents for the transaction as well as various side agreements.

- Advising Polish footwear manufacturer CCC SA (the largest manufacturer of footwear and fastest growing footwear company in Europe, listed on the Warsaw Stock Exchange) on the acquisition of its franchised business in Romania that included a retail network of 56 footwear stores throughout Romania.
- Advising Corinthia Hotels in relation to the taking over of the management and operation of Grand Hotel du Boulevard Bucharest.
- Advising Orbis/Accor on the acquisition of Hotel Mercure Unirii.

Managers and occupiers

- Advising TT Electronics (a global electronics company supplying the world's leading manufacturers in the automotive, defence, aerospace, telecommunications, computing and industrial electronics markets) on the lease of two factory units near Timisoara.

Financing

- Advising Raiffeisen Bank Romania and Raiffeisen Bank International on the development and investment financing of the construction and operation of the Veranda shopping centre in Bucharest.

Facts and figures



Located in Bucharest



4 real estate lawyers



Languages: English,
French and Romanian

Contact us



CMS Bucharest
T +40 21 4073 800
F +40 21 4073 900



Roxana Fratila
T +40 21 4073 839
E roxana.fratila@cms-cmno.com

Alexandru Dumitrescu
T +40 21 4073 953
E alexandru.dumitrescu@cms-cmno.com



Russia

Facts and figures



Located in Moscow



1 real estate partner,
1 counsel and 4 lawyers



Languages: Russian, English,
German and French

Contact us



CMS Moscow
T +7 495 786 4000
F +7 495 786 4001



Jean-Francois Marquaire
T +7 495 786 4000
E jf.marquaire@cmslegal.ru

Artashes Oganov
T +7 495 786 4086
E artashes.oganov@cmslegal.ru

Recent work highlights

Planning and environmental

- Advising a leading German agricultural technics manufacturer on planning and construction issues arising in connection with allocation of its production site.
- Acting for an international wine producer on the acquisition of state-owned lands underlying the client's vineyards.

Construction and development

- Advising the world's largest wind turbine manufacturer on the launch of its renewable energy project in cooperation with a Russian co-investor.
- Advising PPG, a leading US-based paints and coatings manufacturer, in connection with the construction of its first production site in Russia.

Investment and disposal

- Advising Coalco, a leading Russian developer, on the sale of 90% in three business-class residential development projects in Moscow – Tsar Square, Presnya City and Basmanny 5 – to a real estate arm of VTB Bank.
- Advising BP on the sale of a Class A office building in Moscow downtown.
- Acting for a Dutch logistics operator in connection with the acquisition of a land plot in the Moscow region for the purposes of setting up a warehouse.

Managers and occupiers

- Providing corporate occupier advice to Russian and international companies in connection with the lease of office premises in Moscow and other cities.
- Advising Immofinanz Group on leasing out retail premises in two benchmark shopping centres in Moscow.

Financing

- Advising Aareal Bank in connection with a USD 647.3m structured syndicated loan to a Russian-based developer to refinance its existing debt as well as to fund new projects in Russia, secured by 16 real estate objects.
- Advising an Austrian bank on a USD 45m limited recourse financing structure of a business centre in St. Petersburg.
- Acting for a leading warehouse developer, as borrower, in relation to a refinancing by a major Russian state-owned bank of a USD 100m financing of a warehouse complex in the Moscow region.

Scotland

Recent work highlights

Planning and environmental

- Acting for Stirling Council at a public enquiry with the development of a national tennis centre being promoted by Judy Murray, mother of Andy Murray, Wimbledon Champion.
- Acting for EDF ER on the development of Dorenell Wind Farm, one of the largest onshore wind developments in Scotland.

Construction and development

- Advising TH Real Estate on the GBP 1bn Edinburgh St James development, including advising on property development, planning, CPO, competition/state aid, construction, pre-lets and related issues.
- Acting for Murray Estates on the acquisition and development of Edinburgh's new Garden District which will deliver up to 6,200 new homes.

Investment and disposal

- Advising on the acquisition, disposal and ground leases of various hotel assets around Scotland for clients including Aberdeen Asset Management, Standard Life Investments, TH Real Estate's European Cities Fund, Oaktree Capital, Invesco, Kennedy Wilson and FRP Advisory.
- Advising on the acquisition, joint development funding and letting of 3–8 St Andrew Square, Edinburgh for Standard Life Investments. The GBP 75m, 108,000 sq ft deal is the biggest pre-let of office space in Edinburgh for a decade.

- Acting for TH Real Estate's European Cities Fund on the acquisition of the 220,000 sq ft mixed-use OMNi Centre, Edinburgh.
- Advising Aberdeen Asset Management on the GBP 47m disposal of Exchange Place 1, Edinburgh to a German investment fund and separately on the GBP 39m disposal of Exchange Place 2 & 3, Edinburgh to an overseas client of HSBC Private Bank.

Managers and occupiers

- Providing strategic and "business as usual" advice for the operational property requirements of a number of corporate occupiers including Standard Life, EY, Direct Line Group, Clydesdale and Yorkshire Bank, Nationwide Building Society and Wolseley UK.

Financing

- Advising various banks on financing of Scottish hotels, including Courtyard by Marriott Edinburgh City, Courtyard by Marriott Edinburgh West and Roxburgh Hotel, Edinburgh.
- Advising a syndicate of five lenders on the GBP 300m refinancing of the Peel group, including the Glasgow Harbour development sites.

Investment and disposal

- Advising Starwood Capital Group on the acquisition of the St Vincent Plaza office development in Glasgow, the largest office investment in Scotland in recent years.
- Advising UBS Asset Management on the purchase of Quartermile 2, part of the Quartermile development in Edinburgh.

Facts and figures



Located in Edinburgh, Glasgow
and Aberdeen



13 real estate partners
and 49 lawyers



Languages: English

Contact us



CMS Edinburgh
T +44 131 228 8000
F +44 131 228 8888

CMS Glasgow
T +44 141 222 2200
F +44 141 222 2201



Allan Wernham
T +44 141 304 6056
E allan.wernham@cms-cmno.com

Stuart Tait
Partner
T +44 131 200 7417
E stuart.tait@cms-cmno.com



Serbia

Facts and figures



Located in Belgrade



4 real estate lawyers



Languages: Serbian, Bosnian, Montenegrin, English, German, Russian, Italian and French

Contact us



CMS Belgrade

T +381 11 3208 900

F +381 11 3208 930



Marija Marošan

T +381 11 3208 900

E marija.marosan@cms-rrh.com

Recent work highlights

Planning and environmental

- Advising the EBRD on the first street lighting PPP projects in the city of Belgrade and the city of Novi Sad, expected to result in a significant improvement in the cities' overall energy efficiency.
- Advising Fintel Energija SPA/MK Fintel Wind in relation to three wind farm projects in Serbia covering all standard and major legal aspects of the projects.

Construction and development

- Advising Zumtobel Group on the establishment of its business in Serbia, including on the acquisition of state-owned land, real estate contracts and the lease agreement.
- Advising Carl Kuehne KG in the process of acquisition of land and production facilities in two locations in Serbia.
- Advising Lear Corporation on all aspects of both greenfield and brownfield investment into the opening of a manufacturing plant in Serbia.

Investment and disposal

- Assisting the Belgrade Nikola Tesla Airport in the process of further strategic development of the Airport, which, at first, included extensive evaluation of the Airport business and assets, assessment of all issues relevant for the development and operation of the Airport, as well as offering relevant solutions. The legal support has also included drafting of amendments to the concessions and

- PPP legislation, drafting of the new law on airport management, as well as extensive advice on various real estate related matters.
- Advising FCC on regulatory, real estate, corporate, financing and environmental matters associated with the largest waste-for-energy project in the CEE region.
- Advising a consortium composed of leading international construction and parking operator companies in relation to the participation in the tender for the designing, building, financing, operating, maintaining and transferring underground garages located in the centre of Belgrade.

Managers and occupiers

- Advising Ametek Inc. in the course of complex transactions relating to the construction and lease agreements for several production halls, as well as the sale and purchase of real estate.
- Advising AmRest in relation to the lease negotiations in Serbia (tenant side), as well as on the construction of real estate properties in several locations in Belgrade.

Financing

- Advising the EBRD and the IFC on the refinancing of Delta mall acquisitions in Serbia, Montenegro and Macedonia.
- Advising UniCredit Group on the facility agreements (EUR 60m+) and security documents for financing of the development of Airport City Belgrade, the largest office park in Serbia, and refinancing of the existing loans.

Singapore

Recent work highlights

Construction and development

- A contractor in disputes subject to ICC arbitration (English law, Paris seat) relating to delay and disruption and allegations of wrongful termination where over USD 40m is claimed.
- A contractor in relation to a DIAC arbitration (UAE law, Dubai seat) where over AED 110m is claimed arising out of an airport construction project in the UAE.
- An employer on multiple related disputes subject to ICC arbitration arising out of EPC contracts (English law, London and Paris seats) relating to delays, disruption and defective works.
- An EPC contractor in relation to disputes subject to ICC arbitration arising out of the construction of a power plant (English law, Singapore seat).
- A contractor on the Doha Metro project in relation to contractual issues.
- An oil major in an SCC arbitration (English law, Stockholm seat) with a security contractor arising out of a project in Iraq.
- A major FMCG group in relation to project structure and negotiating contracts for the construction of an AED 1.2bn+ fully automated warehouse in the MENA region on an EPC basis.
- Acting in disputes for a consultant on the Doha Metro project.
- A specialist contractor in relation to multiple disputes arising out of the refurbishment of a luxury hotel in the GCC subject to DIAC arbitration.

- Contractors and consultants on contracts for the Dubai Expo 2020 and Qatar 2022 World Cup projects.

Investment and disposal

- UBS Asset Management AG on multiple real estate fund investments throughout the APAC region on behalf of the UBS Global Real Estate multi-manager team.
- Aviva Investors in connection with its investment into an Australian real estate fund by way of a secondary unit sale.
- Employees Provident Fund of Malaysia on the establishment of its multi-billion dollar Shariah-compliant European real estate fund, KWASA Europe-I.
- A Malaysian fund manager on the establishment of a Shariah-compliant UK real estate fund targeting capital commitments in excess of USD 500m.
- Poly Property Group (HK) on its joint venture with Lendlease to own and develop a GBP 100m residential development in London.
- GSA Group on the establishment of a three-way joint venture to acquire and develop a purpose-built student accommodation site in Tokyo, Japan.
- Silk Road Holdings Pte. Ltd., THRE's Singapore-domiciled Enhanced Tier Fund on the structuring and financing of its high-end designer outlet mall investments in China, including its joint venture arrangements with European investors and local Chinese developers.

Facts and figures



Located in Singapore



2 real estate partners and 4 lawyers



Languages: Malay and English

Contact us



CMS Singapore

T +65 6720 8278

F +65 6720 8279



Matthew Nortcliff

T +65 8721 8781

E matthew.nortcliff@cms-cmno.com

Jeremie Witt

T +65 6720 8278

E jeremie.witt@cms-cmno.com



Slovakia

Facts and figures



Located in Bratislava



1 real estate partner
and 10 lawyers



Languages: Slovak, Czech, English,
German, Russian and Hungarian

Contact us



Michal Huťan
T +421 222 111 500
E michal.hutan@cms-cmno.com

Peter Šimo
T +42 1 3214 1414
E peter.simo@cms-rrh.com

Recent work highlights

Construction and development

- Advising a global manufacturer in relation to a Greenfield investment into a production facility in Slovakia.
- Advising a leading online retailer on the development of a logistics asset and on leasing matters.
- Advising Porr and Ferrovial Agromán on their participation in a major PPP project organised by the Slovak Ministry of Transportation with respect to construction of more than 50km of roads in the capital city of Bratislava and its south-eastern commuter area, including support on various legal issues during the construction phase, e.g. drafting and negotiating of agreements with the subcontractors and the concessionaire. The project is one of the largest DBFOT (design-build-finance-operate-transfer) projects currently tendered in the region.
- Advising a leading car producer on the investment with respect to a warehouse of spare parts to be “built to suit”, and subsequently leased in Slovakia, including negotiation of all investment and lease agreements.
- Advising Plastic Omnium, an international company specialised in manufacturing and commercialisation of plastics and automotive parts on the negotiation of contractual documentation with respect to the construction of the extension of the existing production facility.

Managers and occupiers

- Advising a German investor on a lease agreement with tenants of a shopping centre in Bratislava and on enforcement of outstanding receivables against the tenants.

Investments and disposal

- Advising Raiffeisen Bank Group on the sale and leaseback of real estate assets (land and buildings) in the municipality of Banská Bystrica.
- Advising Wood & Co. on the acquisition of Aupark Office Tower from Heitman – the largest office transaction in Slovakia in the last seven years.
- Advising PGIM Real Estate on the acquisition and subsequent sale of the Tulip shopping centre in Martin, Slovakia.

Financing

- Advising a consortium of banks led by KBC Bank on the restructuring of a facility for Eurovea Galleria.
- Advising Erste Group Bank on the Slovak law aspects of the financing of Blackstone for the purposes of the acquisition of 13 logistics assets from Immorfinanz in CEE, including confirmatory due diligence. The portfolio comprises five logistic parks in Romania – five in Hungary, two in Poland and one in Slovakia.

Slovenia

Recent work highlights

Planning and environmental

- Due diligence of Publicus d.o.o., waste management company.
- Due diligence of Surovina d.o.o., Croatian & Serbian subsidiaries.
- Setting up a solar power plant in Slovenia.
- Representing Thales regarding voluminous infrastructure public procurement procedure in Slovenia.

Construction and development

- Advising an international real estate developer on land acquisition and the development of a high-tech business park (investment value EUR 50–80m).
- (Confidential) Advising one of the biggest international construction companies on development of an office building on primer location in Ljubljana (value above EUR 15m).

Investment and disposal

- Performing Buyer’s DD and advising client on transaction structure, support in negotiations with the sellers concerning their investments in real estate (office building) in Slovenia, as well as drafting of transactional and financial documents.
- Performing Buyer’s DD with respect to the acquisition of Merkur trgovina d.d. and several real estate properties leased by Merkur Trgovina (13 premises) (value above EUR 20m).

Managers and occupiers

- Advising the client on numerous legal aspects concerning the construction, management and rental of a commercial centre (value above EUR 20m).
- Advising the client on numerous legal aspects concerning sale and occupation of owned real estate, including contract drafting, representation in proceedings against the lessees and constructors, representation in insolvency matters, issues related to condominium and taxation of real estate.
- (Confidential) Advising owner of a an office building concerning property and facility management contract, including contract drafting and negotiation with the property and facility managers.

Financing

- Advising the client on Slovenian law issues related to loan facilities for financing the purchase of two shopping centres in Slovenia (in Maribor and in Celje). Drafted security documents and advised the client on other legal and practical issues regarding the structure of the transaction (value above EUR 12m).
- Advising the Austrian bank on refinancing for their three clients of a portfolio of three properties – shopping centres; two of them that are located in Slovenia were being lease-financed and were within the refinancing acquired by the Slovenian clients.

Facts and figures



Located in Ljubljana



1 real estate partner
and 2 lawyers



Languages: Slovene, English,
German, Croatian and Serbian

Contact us



CMS Ljubljana
T +386 1 620 52 10
F +386 1 620 52 11



Gregor Famira
T +385 1 4825 600
E gregor.famira@cms-rrh.com

Dunja Jandl
T +386 1 620 5210
E dunja.jandl@cms-rrh.com



Spain

Facts and figures



Located in Madrid, Barcelona and Seville



2 real estate partners and 10 lawyers



Languages: English, German, Italian, French and Spanish

Contact us



CMS Madrid
T +34 91 4519 300
F +34 91 4426 045

CMS Barcelona
T +34 93 4941 022
F +34 93 4941 083



Álvaro Otero
T +34 91 4520 013
E alvaro.otero@cms-asl.com

Recent work highlights

Planning and environmental

- CMS Madrid is one of the three panel law firms of The Management Company for Assets Arising from the Banking Sector Reorganization (the SAREB) accredited to advising SAREB on resolving planning issues of its portfolio.

Construction and development

- Advising one of the bidders within the tender process for the redevelopment of FC Barcelona Stadium.
- Advising a client in the tender process for the execution of the development of infrastructure works.

Investment and disposal

- Advising CPPIB Liberty Living on the acquisition of a real estate portfolio for a value of EUR 500m.
- Advising CBRE on the acquisition of RPFI Tormes, owner of the El Tormes shopping centre (Spain), for a value of EUR 74m.
- Advising Patrizia Immobilien in the acquisition of a EUR 30m residential building in Madrid.
- Advising GSA on the acquisition from Oaktree of Nexo Residences platform, one of the most acknowledged Student's Accommodation platforms, with six students' residences in Spain and the ambition to duplicate its size in the next three years.
- Advising CBRE Global Investors in the acquisition from Avignon Capital of a mixed-use office and retail building at calle Fontanella, prime location in Barcelona (Spain).

- Advising Catella on the acquisition from Adania and financing of three developments of residential units subject to social housing regime.
- Advising Signal Real Estate on the acquisition, financing for the acquisition and construction agreements of the Orquidea Hotel in Santa Eulalia del Río (Ibiza, Spain) to be refurbished and operated as a W hotel.

Managers and occupiers

- Advising Chubb Insurance on the leasing of their new headquarters at Paseo de la Castellana (Madrid, Spain).
- Advising Meridia in the ongoing management of its Madrid portfolio.
- Advising Aberdeen Asset Management in the lease of its new HQs in Spain.
- Advising Birkenstock in the lease of new retail premises in a prime commercial location in Madrid.

Financing

- Advising Allianz on the acquisition of 50% of the financing granted in connection with the Las Rozas and La Roca shopping centres, located in Madrid and Barcelona (Spain), respectively.
- Advising Bank Leumi in the financing of hotel developments.
- Advising Bank of Scotland in the regularisation of securities over Spanish assets.

Switzerland

Recent work highlights

Construction and development

- Advising investor regarding the acquisition of land and construction of a residential complex in Zurich, Project Pergamin II.
- Advising investor in connection with the acquisition of a development project in the centre of the City of Basel regarding an underground parking with 350 parking spaces, agreement / ground lease structure incl.
- Advising investor regarding acquisition of real estate development project (logistic building) in Zurich.

Investment and disposal

- Advising client regarding acquisition of two campus facilities (hotel schools) in the Lake Geneva and Canton Valais area (share deal).
- Advising the investor regarding the acquisition of a mixed-use building in Winterthur (office/school), share deal.
- Advising investor regarding acquisition of a real estate company owning a hotel in Interlaken, ongoing advice regarding refurbishment of the hotel.
- Advising client in connection with the acquisition of a residential development in Zurich.
- Advising sellers regarding divestment of a real estate company having as main asset an office building in the CBD of Zurich.

- Advising investor regarding acquisition of a student housing building in Neuchâtel with 150 rooms.
- Advising investor regarding the acquisition of building sites in Geneva.

Managers and occupiers

- Advising client in connection with expansion of sales premises and showrooms in Switzerland.
- Advising an international hotel operator regarding lease agreements for two new design budget hotels in Zurich and Geneva (re-development).
- Ongoing advice of a global IT company regarding the expansion of its Swiss offices (approximately 50,000m², 3,000 – 5,000 additional work stations) at Europaallee near Zurich's main train station.

Facts and figures



Located in Zurich and Geneva



3 real estate partners and 5 lawyers



Languages: German, English and French

Contact us



CMS Zurich
T +41 44 285 11 11
F +41 44 285 11 22

CMS Geneva
T +41 22 311 00 10
F +41 22 311 00 20



Stefan Gerster
CMS Zurich
T +41 44 285 11 11
E stefan.gerster@cms-vep.com

Sibylle Schnyder
CMS Zurich
T +41 44 285 11 11
E sibylle.schnyder@cms-vep.com



Turkey

Facts and figures



Located in Istanbul



2 real estate partners
and 5 lawyers



Languages: English, Turkish,
German and French

Contact us



CMS Istanbul

T +90 212 243 49 28

F +90 212 243 49 38



Döne Yalçın

T +90 212 401 4260

E doene.yalcin@ybb-av.com

Alican Babalıoğlu

T +90 212 401 4260

E alican.babalioğlu@ybb-av.com

Recent work highlights

Planning and environmental

- Advising an oil storage company on environmental issues in connection with its potential acquisitions in Turkey (investment volume EUR 270m+).
- Advising an international lighting-system solutions producer on various environmental issues in Turkey.

Construction and development

- Advising an international energy company on the construction and operation of an air separation unit which will be built under a “built – operate – own” model in the site of a major Turkish steel mill production facility.
- Advising Babcock & Brown on the acquisition and development of a site for a residential project in Maltepe, Istanbul.
- Advising a Turkish company on the construction of a major road bridge in Turkey.

Investment and disposal

- Advising Singapore’s sovereign wealth fund GIC Private Limited on its acquisition of a 21.4% stake in Turkish real estate company Rönesans Gayrimenkul Yatırım (Renaissance Real Estate Investments) for EUR 250m.
- Advising UK private equity firm on the acquisition of a major Turkish construction company, their first investment in Turkey.

- Advising Amstar in connection with the sale of its 50% share in three shopping centres, totalling approximately 125,000m², in Turkey to Ronesans Gayrimenkul Yatirim A.S. This is one of the largest real estate transactions to occur in Turkey over the last twelve months.

Managers and occupiers

- Advising a multilateral financial institution on the establishment of a branch office in Turkey, including extensive negotiations with the property owner.
- Advising an Austrian hotel management group on the lease of a large hotel in Turkey, which they will refurbish and operate.
- Advising a US private equity fund and its Turkish JV partner in connection with the preparation of facility management and property management agreements.

Financing

- Advising a large infrastructure group on the financing, construction, operation and maintenance of a major Turkish highway.
- Advising a consortium of banks consisting of a leading German bank and two major Turkish banks in connection with the refinancing of a shopping mall in Istanbul.

Ukraine

Recent work highlights

Planning and environmental

- Conducting comprehensive due diligence for Nestlé of Technocom, including verifying the legitimacy of the land title and reviewing environmental compliance.
- Advising a Belgian mineral and metal extraction company on potential acquisition of clay production fields in Ukraine, including extensive two-stage due diligence with respect to a group of companies who own those fields in Ukraine, including review of planning and environmental matters.

Construction and development

- Advising a German investor on renewable energy on real estate, construction, regulatory, corporate and energy law issues with regard to the construction of a 500 MW wind power plant.
- Advising Vestas, one of the world’s largest wind turbine manufacturers, on a number of construction matters, including drafting of the core construction agreements in Ukraine for the following wind power projects: Botievo (200 MW); Stavki & Beregovaya (21 MW); Stariy Sambir (13,2 MW); Novorosiyye (9 MW).
- Advising an Austrian construction company on the legal issues related to the construction of the multifunctional building with social, public, office facilities and underground parking.
- A leading global provider of high-quality sporting goods on the expansion of its operations into Ukraine.

Investment and disposal

- Advising one of the leading German energy and utilities service companies on various matters relating to real estate law in Ukraine as well as on various issues relating to business management and acquisition in Ukraine.
- Scatec Solar ASA, a Norway-based solar power producer, on:
 - On the acquisition of a stake in solar projects portfolio from Rengy Development, one of the largest developers and independent solar power producers in Ukraine, with the aim to build solar power plants with the total capacity of 47 MW in the Mykolaiv region of Ukraine
 - On the acquisition of two solar projects in the Cherkassy region of Ukraine, with a capacity of 33 MW and 50 MW

Managers and occupiers

- Assisting a foreign cultural institute on renegotiation of the office lease agreement with the State Property Fund of Ukraine and execution of two sublease agreements relating to the state property real estate.

Financing

- Advising an Austrian leasing company on restructuring of their leasing and loan portfolio in Ukraine via buyback of real estate leased out under finance lease agreements.
- MV Cargo – on the USD 74m financing of construction of a new grain terminal in Ukraine’s Black Sea port of Yuzhni

Facts and figures



Located in Kyiv



2 real estate partners
and 2 lawyers



Languages: English, German,
French, Ukrainian and Russian

Contact us



CMS Kyiv

T +380 44 39133 77

F +380 44 39133 88

T +380 44 500 1718

F +380 44 500 1716



Natalia Kushniruk

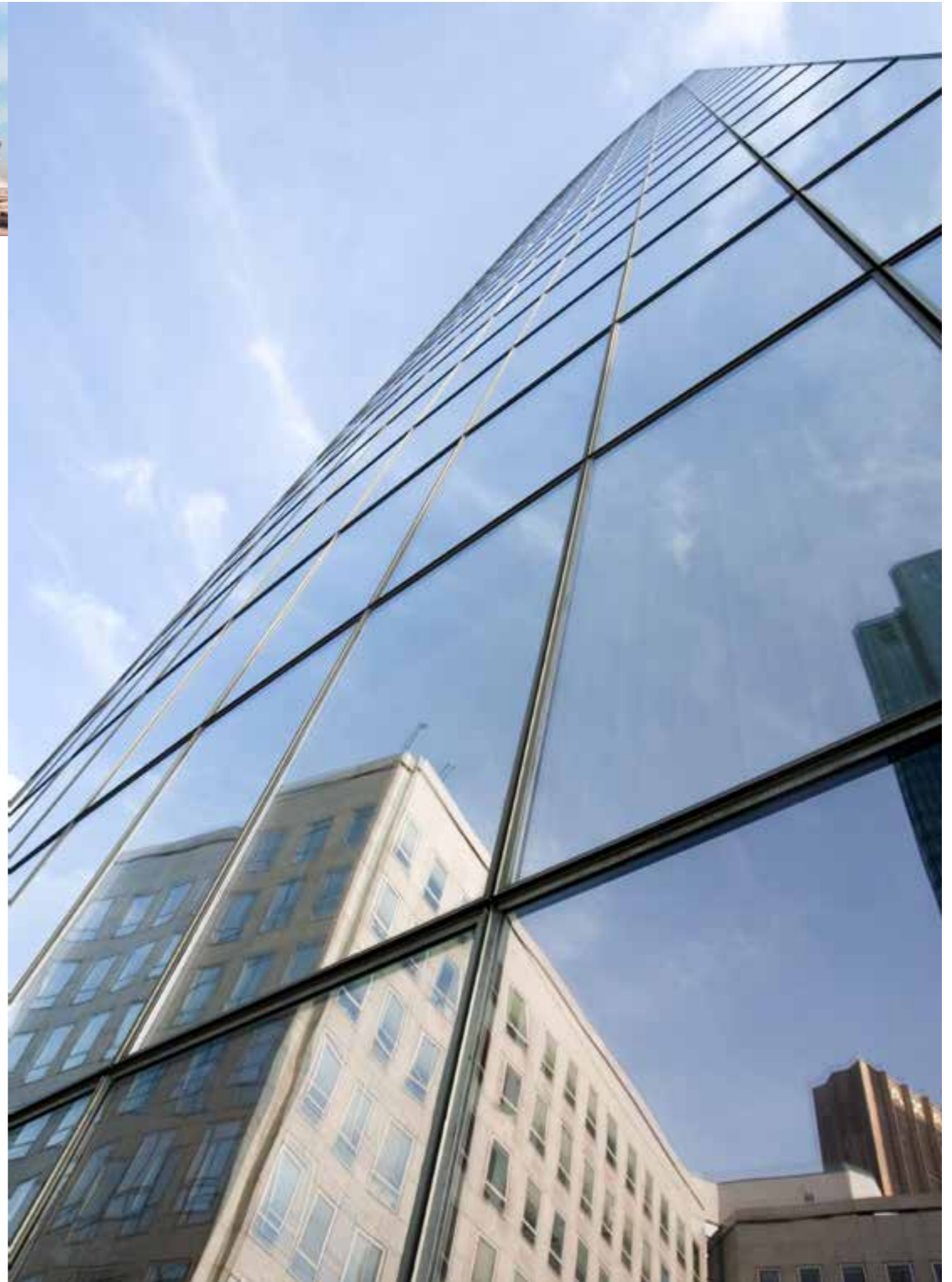
T +380 44 391 7724

E natalia.kushniruk@cms-cmno.com

Anna Pogrebna

T +380 44 500 1718

E anna.pogrebna@cms-rrh.com



United Arab Emirates

Facts and figures



Located in Dubai



3 real estate partners
and 3 lawyers



Languages: English, French
and Arabic

Contact us



CMS Dubai
T +971 4 374 2800
F +971 4 374 2803



Geoff Smith
T +971 4 374 2819
E geoff.smith@cms-cmno.com

John O'Connor
T +971 4 374 2806
E john.oconnor@cms-cmno.com

Recent work highlights

Real Estate

- Advising Global Student Accommodation Group on the sale and leaseback of the first purpose built student accommodation scheme in Dubai.
- Advising Aston Developments Limited on the USD 200m development, sale and leasing of Aston Plaza & Residences located in Dubai Science Park.
- Advising Oimage LLC on the USD 2.9bn Oimage Project, for the development of approximately 245 acres of prime beachfront land facing the Gulf of Oman.
- Advising Omnivest on contract documentation in relation to a USD 1bn integrated tourist complex at Salalah in the Sultanate of Oman.
- Advising Union Properties PJSC on the USD 150m sale and development of Auto Mall, MotorCity.

Hotels

- Advising Corinthia on the hotel management agreement and technical service agreement for the Corinthia of Meydan Beach five-star hotel and residences development in Dubai.
- Advising Crowngate International on the hotel management agreement, technical services agreement and related agreement with Minor Group for the four-star Avani Resort development in RAK.
- Advising Abdul Latif Jameel on the USD 2.6bn, 7,000 room, Jabal Al Ka'aba Hotel project in Makkah, Kingdom of Saudi Arabia.

Financing

- Advising major UK bank on Shariah-compliant real estate acquisitions, refinancings and developments with an aggregate value exceeding USD 1bn.
- Advising a pan-European Shariah compliant real estate fund on implementing an Ijara for the acquisition of real estate in Germany.
- Advising the real estate subsidiary of a leading American insurance company on the USD 120m Shariah compliant financing of an office tower.

CMS a global perspective



Client-focused thought leadership initiatives



Deal Point Study

Drawing on data from 1,377 real estate transactions advised on by CMS in 14 European countries from the start of 2010 to the end of 2017, we used a standard evaluation form to capture, categorise and systematically analyse the individual contract clauses. The study covers asset and share deals as well as sale-and-leaseback transactions, with both individual and portfolio transactions being analysed. Transactions from all real estate segments were included, in particular office, retail, residential, and logistics buildings.



Guide to Real Estate Transaction Costs and Taxes

The *CMS Guide to Real Estate Transaction Costs and Taxes in Europe*, a highly practical overview of costs, including taxes, relating to acquisitions and disposals of real estate, both as an asset or a company. Updated frequently it allows you to easily compare the costs of investing in different European countries.



Overview of retail lease agreements

The publication looks at different aspects of lease agreements across a number of key European countries.



CEE Office Real Estate Compass 2018: Is your workplace Millennial-ready?

A new report by CMS and Colliers International *CEE Office Real Estate Compass: Is your workplace Millennial-ready?* looks at the changing nature of the workplace in CEE and includes a survey of 72 CEE-based professionals drawn from a diverse range geographically and in terms of seniority.



Box Clever – CMS Research Report

In summer 2018, CMS in conjunction with FTI Consulting, conducted a major piece of research into logistics property. We polled 353 real estate investors, developers and advisers owning assets worth more than £400bn, as well as 253 UK retail decision makers with the aim of finding how their supply chains and retail estates are changing in the face of the e-commerce revolution. In addition, we conducted six in-depth interviews with leaders in the logistics property field (Delin, Blackstone, Verdion, PLP, SEGRO and Goodman) and one interview with a leading online fashion retailer on an unattributed basis.





Law . Tax

Your free online legal information service.

A subscription service for legal articles
on a variety of topics delivered by email.
cms-lawnow.com



Law . Tax

Your expert legal publications online.

In-depth international legal research
and insights that can be personalised.
eguides.cmslegal.com

CMS Legal Services EEIG (CMS EEIG) is a European Economic Interest Grouping that coordinates an organisation of independent law firms. CMS EEIG provides no client services. Such services are solely provided by CMS EEIG's member firms in their respective jurisdictions. CMS EEIG and each of its member firms are separate and legally distinct entities, and no such entity has any authority to bind any other. CMS EEIG and each member firm are liable only for their own acts or omissions and not those of each other. The brand name "CMS" and the term "firm" are used to refer to some or all of the member firms or their offices.

CMS locations:

Aberdeen, Algiers, Amsterdam, Antwerp, Barcelona, Beijing, Belgrade, Berlin, Bogotá, Bratislava, Bristol, Brussels, Bucharest, Budapest, Casablanca, Cologne, Dubai, Duesseldorf, Edinburgh, Frankfurt, Funchal, Geneva, Glasgow, Hamburg, Hong Kong, Istanbul, Kyiv, Leipzig, Lima, Lisbon, Ljubljana, London, Luanda, Luxembourg, Lyon, Madrid, Manchester, Mexico City, Milan, Monaco, Moscow, Munich, Muscat, Paris, Podgorica, Poznan, Prague, Reading, Rio de Janeiro, Riyadh, Rome, Santiago de Chile, Sarajevo, Seville, Shanghai, Sheffield, Singapore, Skopje, Sofia, Strasbourg, Stuttgart, Tehran, Tirana, Utrecht, Vienna, Warsaw, Zagreb and Zurich.

cms.law