

CMS equip

Helping start-ups scale

Helping start-ups scale

Starting, and building, a successful business takes a good idea, energy and determination plus the right opportunities and the right people.

Working with, and investing in, start-ups excites us here at CMS. Working with entrepreneurs on bright ideas, fostering growth and innovation in the technology sector and helping to support the industry stars of the future gets us out of bed in the morning.

As an early-stage business, legal advice may be pushed to the bottom of the priority list, not least due to the costs associated with it. However, for a business to scale successfully, especially when investors are involved, having the right foundations is imperative.

Who are we?

- A full-service law firm with a strong sector focus in technology, media and telecommunications
- Working with some of the biggest names in tech as well as up and coming disruptors
- Well networked in the industry through clients and partners
- The only law firm that can offer you extensive IP support through a strong international team of more than 300 IP lawyers, patent and trade mark attorneys
- Providing you access to the regional resources in Singapore, China and Hong Kong, as well as beyond in Europe, Middle East, Africa and Latin America through our global equip programme

What is equip?

equip is a dedicated programme to support start-ups who are intellectual property rich in the form of:



Sector-focused legal advice at special discounted rates

A 50% discount on our standard hourly rates, up to S\$50,000 per year.



Introductions to relevant industry players

Whether it be like-minded entrepreneurs or investors, we know who you should be talking to.



Fixed fee services

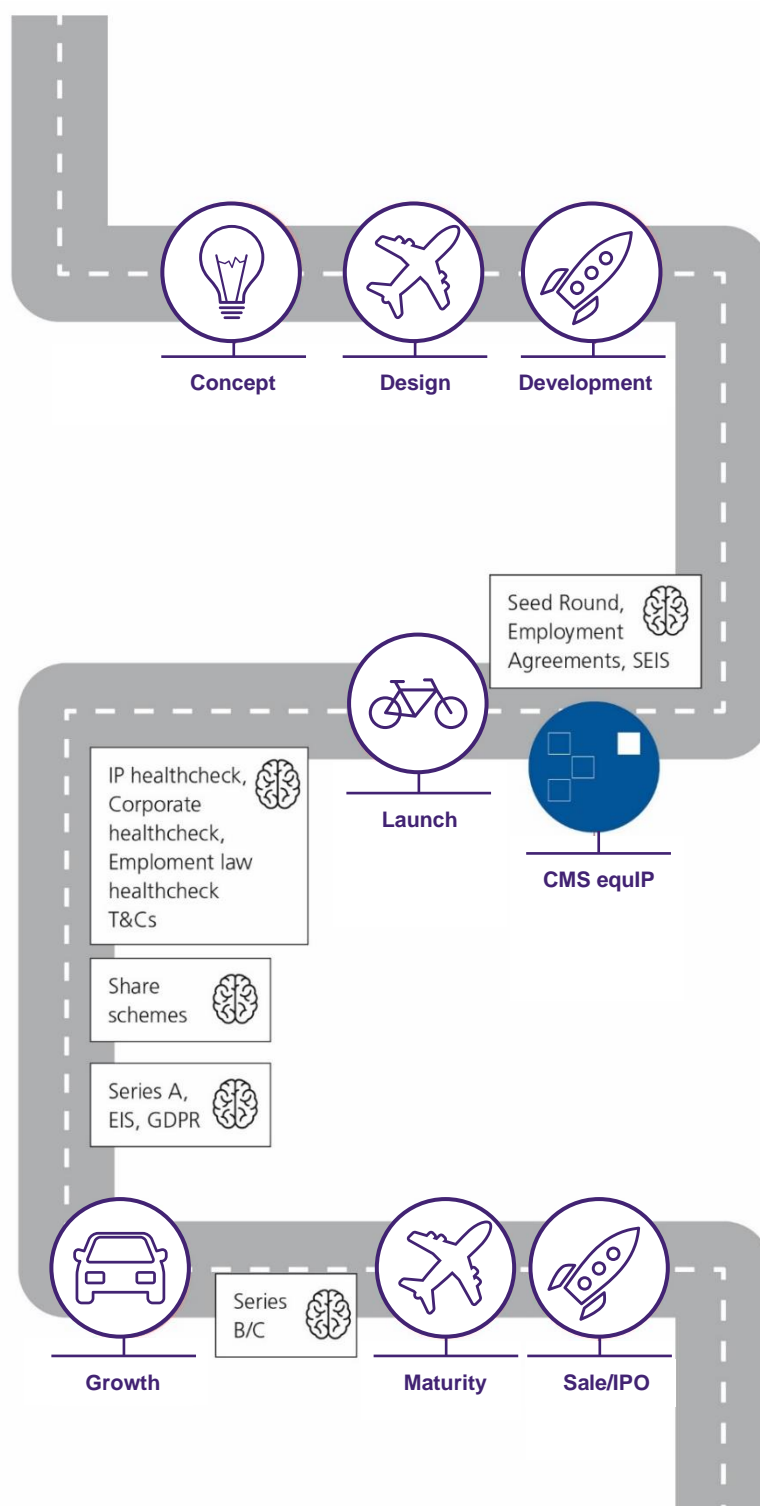
This includes an IP healthcheck and advice on fundraising, share schemes, employment and T&Cs.



Added value

Access to exclusive events, workshops and a regular member newsletter.

The start-up roadmap and typical legal considerations



Our fixed fee menu

We offer legal services in several practice areas for fixed fees in order to give equiP members more certainty over their legal costs.

IP health check



IP can be vital for the future of your business. Our health check service, delivered by our market-leading IP team, helps maximise this value for the life span of your company.

Fundraising



Access to capital is an essential part of your growth story, and we will use our experience and network of investors to help get the funding you need.

Share schemes



Share options provide a cost-effective means for you to recruit and reward employees as an alternative to significant salaries. We can help you implement mutually beneficial share-based reward structures.

Employment



Keeping your talent happy is essential. equiP gives you access to our fixed fee employment law services to help you protect your company's interests in a simple and cost-efficient manner.

Website T&Cs



Our lawyers will apply their decades of online experience to your business, working for you to ensure you gain the trust of your consumers and potential investors while protecting your business.



Get in touch

**Toby Grainger**

Managing Partner, Singapore

T +65 9837 8559

E toby.grainger@cms-cmno.com

**Sheena Jacob**

Partner

T +65 6422 2851

E sheena.jacob@cms-holbornasia.com

**Babita Ambekar**

Partner, Corporate and India Lead

T +44 20 7067 3045

E babita.ambekar@cms-cmno.com

**Gerald Licnahan**

Partner

T +65 6439 3494

E gerald.licnahan@cms-cmno.com

**Ying Yi Liew**

Partner

T +65 6422 2855

E yingyi.liew@cms-holbornasia.com

**Sam Ng**

Of Counsel

T +65 8858 3082

E sam.ng@cms-holbornasia.com

**James Fisher**

Senior Associate

T +65 6422 2826

E james.d.fisher@cms-cmno.com

**Jaya Malhotra**

Senior Associate

T +65 6422 2829

E jaya.malhotra@cms-holbornasia.com

**Leslie Tay**

Associate

T +65 6422 2835

E leslie.tay@cms-holbornasia.com

**Andre Choo**

Associate

T +65 6422 2827

E andre.choo@cms-holbornasia.com

**Sherman Poon**

Associate

T +65 6439 3491

E sherman.poon@cms-holbornasia.com

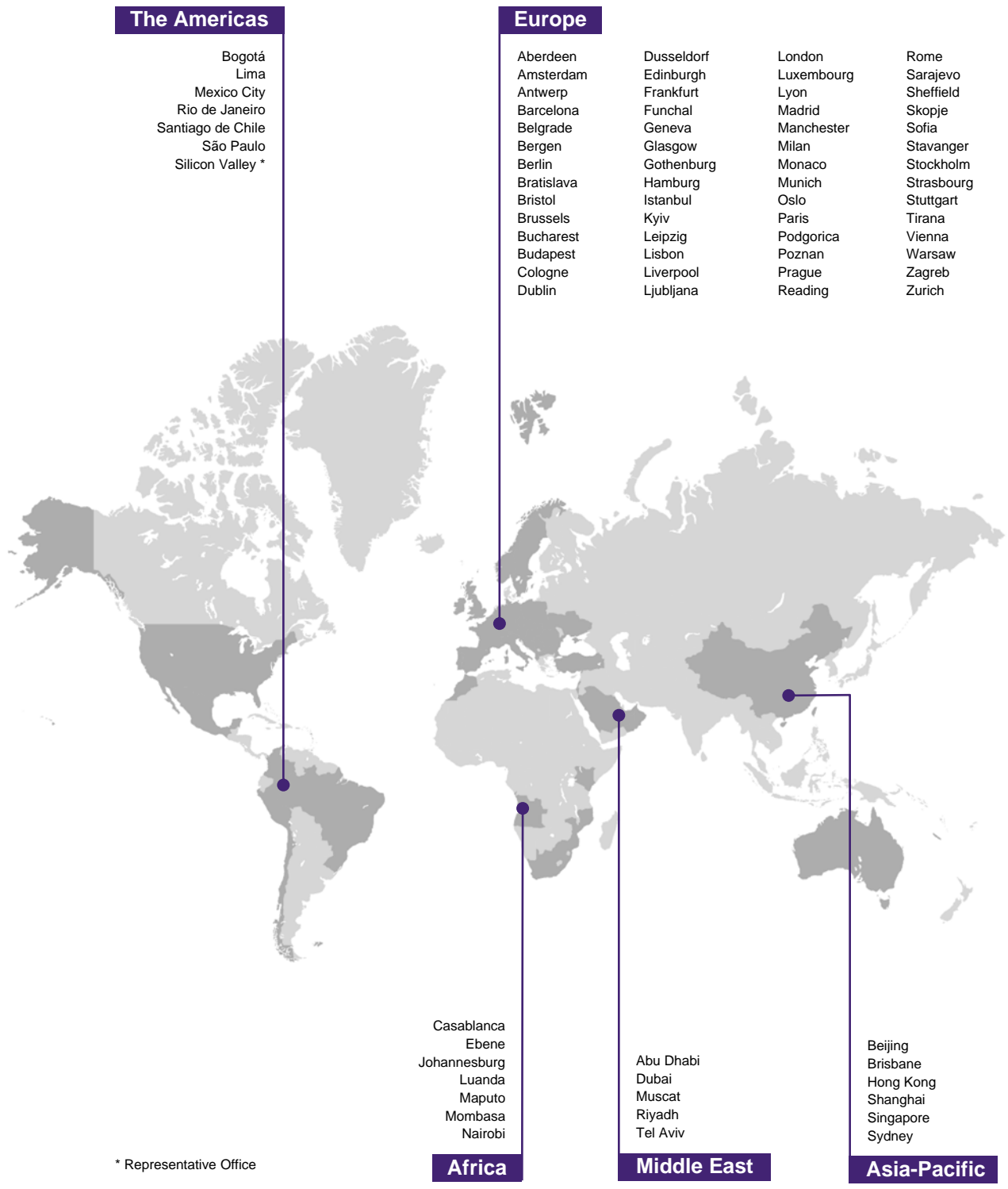
**Sophie Tan**

Associate

T +65 6422 2825

E sophie.tan@cms-holbornasia.com

Locations worldwide





Your free online legal information service.

A subscription service for legal articles on a variety of topics delivered by email.

cms-lawnow.com

The information held in this publication is for general purposes and guidance only and does not purport to constitute legal or professional advice.

CMS LTF Limited (CMS LTF) is a company limited by guarantee incorporated in England & Wales (no. 15367752) whose registered office is at Cannon Place, 78 Cannon Street, London EC4N 6AF United Kingdom. CMS LTF coordinates the CMS organisation of independent law firms. CMS LTF provides no client services. Such services are solely provided by CMS LTF's member firms in their respective jurisdictions. CMS LTF and each of its member firms are separate and legally distinct entities, and no such entity has any authority to bind any other. CMS LTF and each member firm are liable only for their own acts or omissions and not those of each other. The brand name "CMS" and the term "firm" are used to refer to some or all of the member firms or their offices; details can be found under "legal information" in the footer of cms.law.

CMS Locations: Aberdeen, Abu Dhabi, Amsterdam, Antwerp, Barcelona, Beijing, Belgrade, Bergen, Berlin, Bogotá, Bratislava, Brisbane, Bristol, Brussels, Bucharest, Budapest, Casablanca, Cologne, Dubai, Dublin, Duesseldorf, Ebene, Edinburgh, Frankfurt, Funchal, Geneva, Glasgow, Gothenburg, Hamburg, Hong Kong, Istanbul, Johannesburg, Kyiv, Leipzig, Lima, Lisbon, Liverpool, Ljubljana, London, Luanda, Luxembourg, Lyon, Madrid, Manchester, Maputo, Mexico City, Milan, Mombasa, Monaco, Munich, Muscat, Nairobi, Oslo, Paris, Podgorica, Poznan, Prague, Reading, Rio de Janeiro, Riyadh, Rome, Santiago de Chile, São Paulo, Sarajevo, Shanghai, Sheffield, Silicon Valley, Singapore, Skopje, Sofia, Stavanger, Stockholm, Strasbourg, Stuttgart, Sydney, Tel Aviv, Tirana, Vienna, Warsaw, Zagreb and Zurich.

cms.law