

Environment

The Team



Céline Cloché-Dubois
Partner

celine.cloche-dubois@cms-fl.com



Anne Plisson
Associate

anne.plisson@cms-fl.com



Laure Mimoun
Associate

laure.mimoun@cms-fl.com



Chiara Corrasco
Associate

chiara.corrasco@cms-fl.com



Audrey Pichon Varesio
Associate

audrey.pichon-varesio@cms-fl.com



CMS Francis Lefebvre is sought out by builders, developers, construction and public works groups, banks and investment funds to deal with issues of waste management, the circular economy and renewable energy. The team assists its clients in advisory, litigation, transactional and regulatory matters. Céline Cloché-Dubois, who heads the practice, is an expert in environmental regulatory matters and is also involved in the real estate field.

TOP TIER FIRM

Legal500

EMEA
2024

Industrial environment

Our team supports its clients in all issues related to the **creation** and **operation** of their facilities:

- **Classified installations - ICPE / SEVESO / IED/ IOTA:** support in the preparation, investigation and obtaining of permits; operational management (development of facilities, modification of requirements, financial guarantees, incidents/accidents, end of activity, sanctions)
- **Polluted sites and soil:** support during the end of activity; site restoration; pollution management (PFAS, etc.); redevelopment of brownfield sites
- **Transactional:** support during acquisitions, sales of industrial and polluted sites, financing operations; environmental risk management; negotiation and drafting of contractual clauses in the context of real estate transactions (sales, leases, sale and leaseback operations)

Our team also represents its clients in the context of **pre-litigation**, **litigation** and the **amicable resolution** of disputes in relation to these topics.

[See our publications/conferences on these subjects.](#) *Examples of our work can be provided on request.*



Circular Economy

Our team assists its clients (producers, distributors, online marketplaces, professional federations and eco-organizations) on all issues related to the **circular economy**. Our team's expertise covers the following topics:

- **Ecodesign** of processes, goods and services
- **Measures to reduce plastic / reuse / recycling** of certain plastic packaging; maximum plastic content of certain products / packaging; etc.
- **Consumer information / environmental claims**: information on the environmental qualities and characteristics of products; repairability index; Triman / info-Tri; greenwashing; etc.
- **Extended producer responsibility (EPR)**: identification of EPR obligations; approval application files (eco-organizations and individual systems); take-back obligations; etc.
- Measures against food and non-food waste

Our team also represents its clients in the context of **pre-litigation**, **litigation** and the **amicable resolution** of disputes in relation to these topics.

[See our publications/conferences on these subjects.](#) Examples of our work can be provided on request.



Waste law & chemicals law

In terms of **waste law**^{*}, our team deals with all waste-related issues, namely:

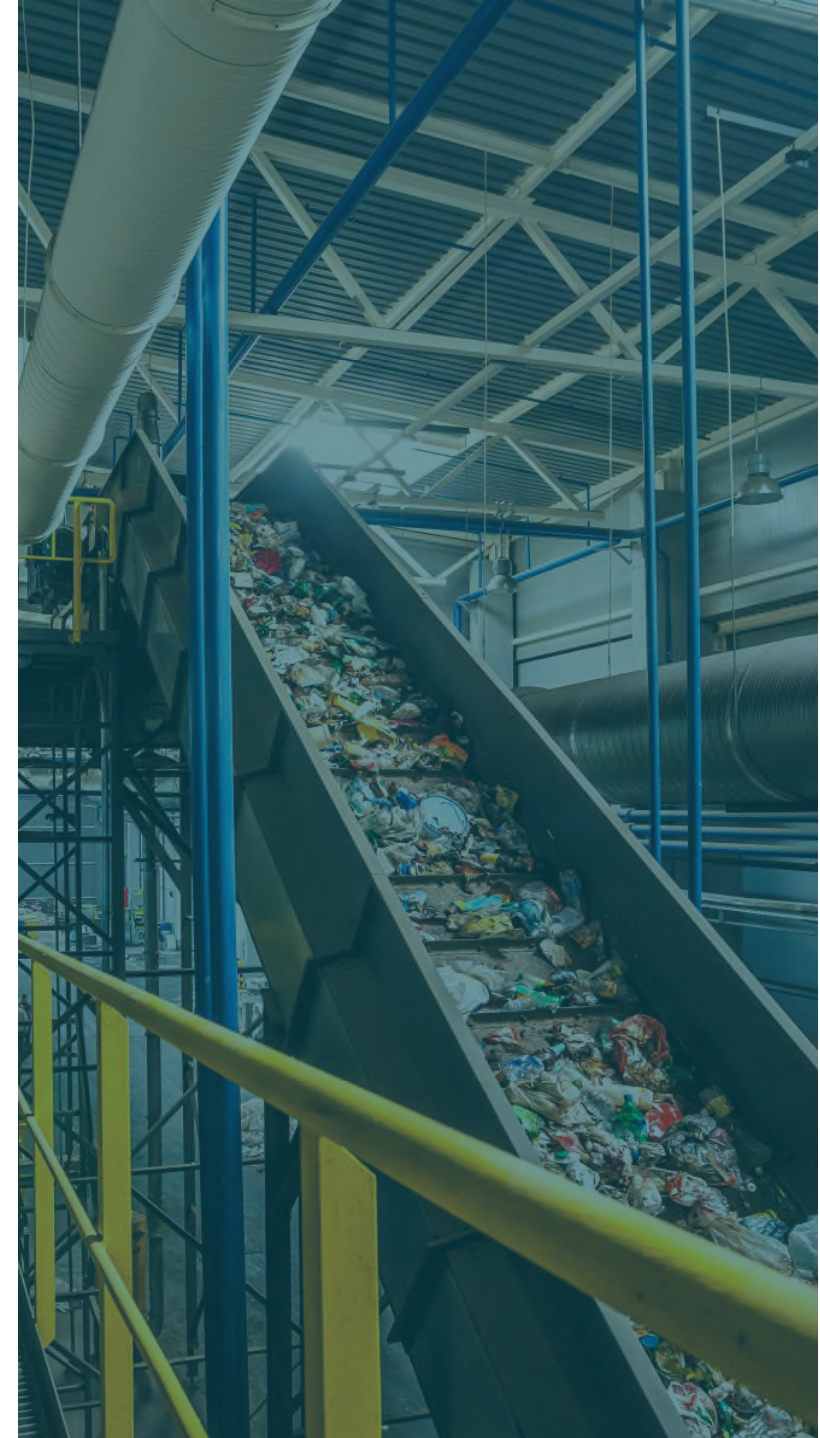
- Waste **management**
- Waste **policies**
- Waste **traceability**
- Waste **transport** and **cross-border movements**
- Exit from **waste status**

^{*} See also our practice in circular economy

Our team's expertise also covers the regulations relating to chemical products/substances (REACH, CLP, etc.)

Our team also represents its clients in the context of **pre-litigation**, **litigation** and the **amicable resolution** of disputes in relation to these topics.

[See our publications/conferences on these subjects.](#) *Examples of our work can be provided on request.*



Sustainable development

Our team assists and advises its clients (**manufacturers, investors, developers, promoters**) on the following topics:

- Water law
- Biodiversity / Protected species
- Land law

This support focuses in particular on the **identification of the rules applicable** to their projects, but also throughout the preparation of their application for **authorization files** and the monitoring of **examination procedures**.

Our team also represents its clients in the context of **pre-litigation, litigation** and the **amicable resolution** of disputes in relation to these topics.

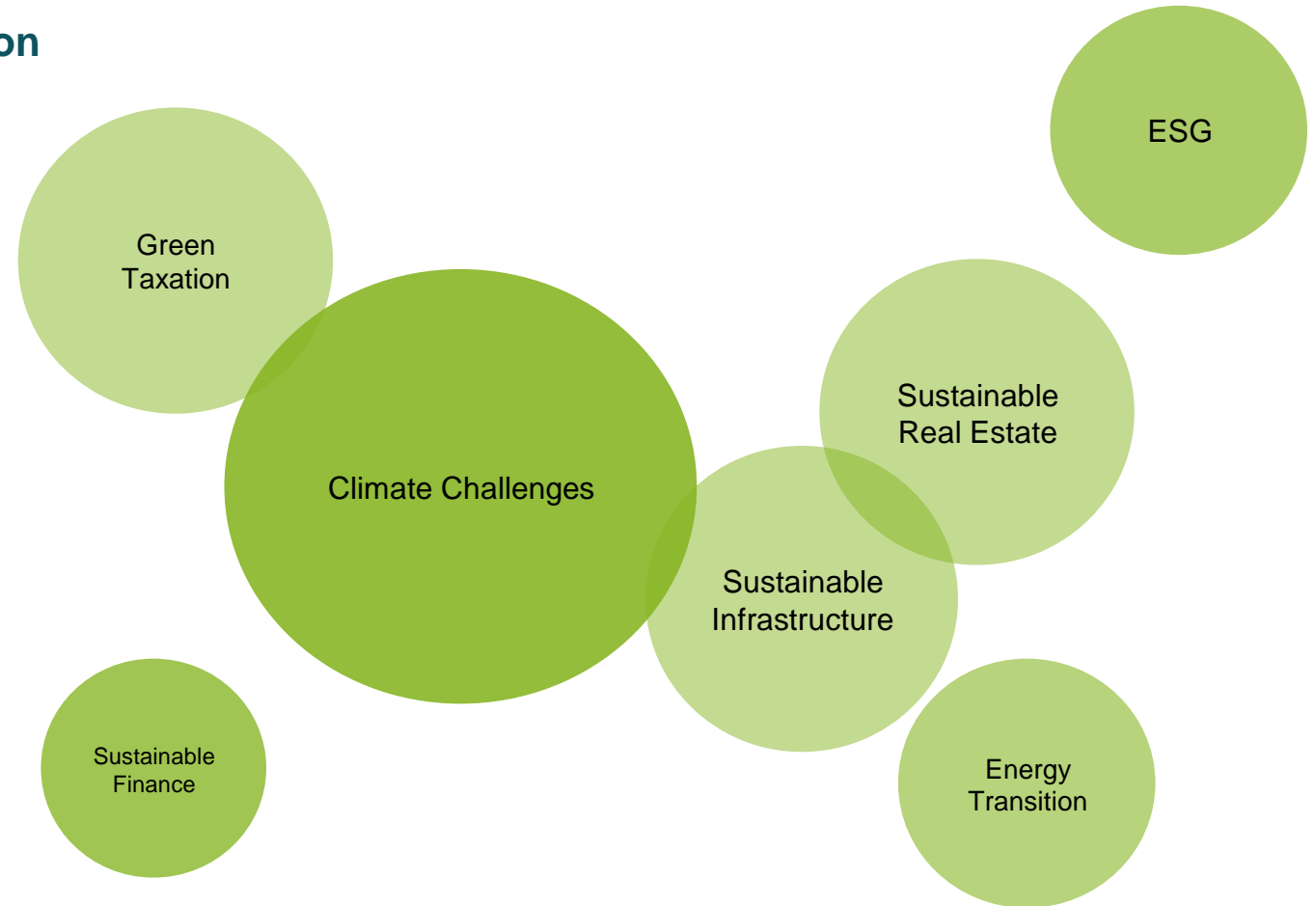
[See our publications/conferences on these subjects](#). *Examples of our work can be provided on request.*

Our cross-disciplinary offer in terms of ecological transition

Our lawyers specializing in ecological transition can assist you with all your issues:

Energy
Environment
Climate challenge and competitiveness
Green financing and sustainable investment
ESG
Competition and state aid
CSR and non-financial reporting
Corporate law and ethical CSR
Public law
Green taxation
Customs and competition
Real estate and sustainable infrastructure
Project financing

More details on our offer for ecological transition on [our dedicated page](#).



CMS Francis Lefebvre Avocats
2 rue Ancelle
92522 Neuilly-sur-Seine Cedex

T +33 1 47 38 55 00

CMS Francis Lefebvre Avocats, entité opérant sous la forme d'une société d'exercice libéral à forme anonyme (S.E.L.A.F.A.), est membre du groupement européen d'intérêt économique CMS Legal Services EEIG (CMS EEIG), qui coordonne un ensemble de cabinets d'avocats indépendants. CMS EEIG n'assure aucun service auprès de la clientèle. Seuls les cabinets d'avocats membres offrent des prestations de services dans leurs ressorts géographiques respectifs. CMS EEIG et chacun des cabinets d'avocats qui en est membre, sont des entités juridiques distinctes dont aucune n'a autorité pour engager les autres. CMS EEIG et chacun des cabinets d'avocats membres sont responsables de leurs propres actes ou manquements et non de ceux des autres membres du groupement. L'utilisation de la marque « CMS » et du terme « cabinet » désigne certains ou la totalité des cabinets d'avocats membres, ou encore leurs bureaux. Consulter le site Internet cms.law/fl pour obtenir des informations complémentaires.

Implantations CMS : Aberdeen, Abu Dhabi, Alger, Amsterdam, Anvers, Barcelone, Belgrade, Berlin, Beyrouth, Bogota, Bratislava, Bristol, Bruxelles, Bucarest, Budapest, Casablanca, Cologne, Dubaï, Düsseldorf, Édimbourg, Francfort, Funchal, Genève, Glasgow, Hambourg, Hong Kong, Istanbul, Johannesburg, Kiev, Leipzig, Lima, Lisbonne, Ljubljana, Londres, Luanda, Luxembourg, Lyon, Madrid, Manchester, Mexico, Milan, Mombasa, Monaco, Moscou, Munich, Muscat, Nairobi, Paris, Pékin, Podgorica, Poznań, Prague, Reading, Rio de Janeiro, Rome, Santiago du Chili, Sarajevo, Séville, Shanghai, Sheffield, Singapour, Skopje, Sofia, Strasbourg, Stuttgart, Tirana, Varsovie, Vienne, Zagreb et Zurich.

cms.law/fl