



**CMS Grau**  
*Full-service  
Global Firm*

# Facing the future of law

The pace at which the world is changing is staggering and a slowdown is nowhere in sight. Technology is expanding the boundaries of what is possible and the increasing interconnectedness of our planet is opening up new markets, sectors and opportunities. To make the most of these, you need a sound business strategy and a partner that can support you in developing and implementing it.

CMS Grau is one of the most important law firms in Peru with 90 years of experience oriented to provide integral legal advice. Our trajectory had made the company prevail and be recognized for our specialized professionals who offer innovative solutions with measurable results according to our clients' needs.

Our philosophy involves our commitment to provide effective and high quality legal service.

Our next-generation mindset is woven into all we do. It means we can anticipate the likely challenges, accelerate our pace and create the space to develop innovative solutions. Our lawyers are genuine experts in their fields, with a grasp of detail that's second to none.

On the next few pages, you will learn more about our global vision, innovative approach and how we can help you achieve your business goals.



***CMS Grau stands out for its comprehensive and personalised approach. The lawyers are very experienced, knowledgeable, and know how to come up with solutions tailored to their clients' needs.***

***Chambers Latin America 2026***

Chambers Latin America Awards 2026 - Shortlisted



***Regional South  
American Practice of the year***

ITR Tax Awards 2025 - Shortlisted



***CMS: International Tax Law  
Firm of the Year***

***CMS Grau: Peru Tax Firm of the  
Year***

**Latin America**

Bogotá  
Cucutá  
Lima  
Mexico City  
Rio de Janeiro  
Santiago de Chile  
São Paulo

**Africa**

Algiers  
Casablanca  
Johannesburg  
Luanda  
Mombasa  
Nairobi

**Middle East**

Abu Dhabi  
Beirut  
Dubai  
Muscat

**Asia-Pacific**

Beijing  
Hong Kong  
Shanghai  
Singapore

**Europe**

Aberdeen  
Amsterdam  
Antwerp  
Barcelona  
Belgrade  
Berlin  
Bratislava  
Bristol  
Brussels  
Bucharest  
Budapest  
Cologne  
Duesseldorf  
Edinburgh  
Frankfurt  
Funchal  
Geneva  
Glasgow  
Hamburg  
Istanbul  
Kyiv  
Leipzig  
Lisbon  
Ljubljana  
London

Luxembourg  
Lyon  
Madrid  
Manchester  
Milan  
Monaco  
Munich  
Paris  
Podgorica  
Poznan  
Prague  
Reading  
Rome  
Sarajevo  
Sheffield  
Skopje  
Sofia  
Strasbourg  
Stuttgart  
Tirana  
Utrecht  
Vienna  
Warsaw  
Zagreb  
Zurich

# Facing the future with you

Our goal is to give our clients the confidence and security to solve not only today's problems, but also to anticipate the challenges of the future.

Being part of CMS gives us the competitive advantage to offer a global, unique and strategic service. We share resources, knowledge, technology, practice areas and sectors among all CMS offices around the world. Our 'Future Facing' approach giving us the ability not only to see what's coming, but the vision to shape it.



***CMS Grau represents 20 of the 100 biggest companies in Latin America. This places the firm as the fourth most popular firm in Peru among these clients.***

*Latin Lawyer 2026*

# Local experience Global perspective

With our unique collaborative structure and our considerable geographic footprint, we provide legal advice that embeds our understanding of local markets in a global context.

We have wide experience advising a large number of local and international clients.

90+  
offices

50+  
countries

7200+  
lawyers



# Our sectors & practice areas

We have cross-border Practice Areas in different CMS jurisdictions. This structure allows us to provide specialized legal advice in the sectors in which our clients operate.

Our CMS teams in key business hubs around the world have deep insights into the coming issues relevant for local markets, providing the advice that best meets your needs. At the same time, they collaborate closely with each other across sectors and borders, working as one global team to serve you across multiple jurisdictions.

This depth and breadth of knowledge enables us to anticipate challenges – and our collective experience enables us to meet them in innovative and sector-shaping ways.

# Facing the future, across every sector



Aviation



Real Estate



Environmental Law



Employment



International Arbitration



Life Sciences & Healthcare



Banking & Finance



Mining, Natural Resources  
and Sustainability



Competition



Consumer Products



Compliance



Intellectual Property



Public Procurement &  
Administrative Law



Bankruptcy & Restructuring



Corporate / M&A



Insurance



Energy & Climate Change



Dispute Resolution



Hotels & Leisure



TMC - Technology, Media &  
Communications



Infrastructure & Projects



Tax

# We're your business partners

At CMS, we see ourselves as more than just legal advisers. We're your business partners. No matter whether you're big or small, you always have our full attention and expertise. Whatever the issue, we work co-operatively with you to help you face the future with confidence.

## **Key players from different sectors**

Our clients are key players in their industries. We advise leading companies in the mining, retail, energy, aeronautics, banking, finance, among others sectors.

The best proof of the solid support we offer and our ability to adapt to change, is the long-lasting professional relationship with our clients, which in some cases lasts more than 50 years.

## ***Absolute confidentiality***

At CMS Grau our priority is to ensure the absolute confidentiality of our clients' businesses. We have an Ethics Policy and a series of mechanisms that responsibly address conflicts of interest.



# Rankings

Each year CMS Grau is listed on different international publications as leading law firm in several practice areas and our lawyers are recognized as experts in their fields.



# Innovation is in our DNA

Innovation and technology are the cornerstones of our approach to finding the solutions that meet your needs. At CMS, we constantly challenge ourselves to develop efficient and cost-effective technological tools for our clients.

## George

The most efficient solution on the market for managing legal compliance. George adapts to the needs of each company and operates in any sector (mining, energy, financial, fisheries, manufacturing of consumer products, among others). It has been in Peru for 20 years and, due to its constant evolution, is now present in Colombia.

## equiP

Through our equiP program, present in Brazil, Chile, Colombia, Mexico and Peru, we offer legal advice and mentoring for startups that adjust to their business and budgets, as well as opportunities to expand to other markets.



# Giving you the tools you need

We understand that as than commercial environments change, our clients require timely information to take strategic decisions.

## Legal updates

We keep you up to speed with all the latest topics and legal developments in our country, which can be found centrally on our website. In addition, we have specific newsletters such as 'El Rayo Empresarial', 'Legal Trends: Competencia, Consumidor y PI', 'Tax Tool', y 'TMC Legal Bytes'.

## Events

We organise free events for our clients, including webinars, breakfasts and workshops, both local and international, on current topics in collaboration with universities, associations, and our offices in more than 45 countries.

## Guides and Reports

Our CMS Expert Guides are written by CMS lawyers from across the jurisdictions where we operate, provide you with in-depth legal research and insights that can be read both online and offline. This allows our clients to access comparative analyses of the legislation of various sectors in +45 countries.



# We are a dynamic, diverse and inclusive

We consider that the dynamism of an organization is the result of adaptability of those who lead it. One of our most important features is diversity.

**30%**

*Female partners*

**14** Women-led practice areas

**46%** *Women leaders in administrative areas*

- » CMS has a Diversity & Inclusion Charter that promotes inclusion and diversity in our organisation. At CMS Latin America, we have **Dione+**, a space that represents our initiatives in DEI.
- » We support the **Quorum** commitment of **WIP Peru** that promotes diversity in professional and academic event panels.



***We create a culture of sustainability in which everyone of our people, whatever their background, can maximise their potential and thrive.***

At CMS, a next-generation mindset is woven into all we do. We're diverse, supportive and inclusive, embracing our corporate social responsibility and creating a culture of sustainability. We maintain constant efforts so that each person, whatever their position in the organization chart, feels in CMS Grau a comfortable and respectful space, in which their unique talent is valued and where they can develop their full potential.

In this diversity we have found the best initiatives and strategies that have positioned us as one of the most important law firms in Peru.

In addition, our CMS Academy program helps our lawyers develop their soft skills through a wide range of training and coaching programmes, seminars and webinars. The Academy has a distinct focus on the business of law, helping participants to better meet the needs of our clients and develop more rewarding careers and lifestyles as well as improving the culture and fabric of CMS.

Follow us:



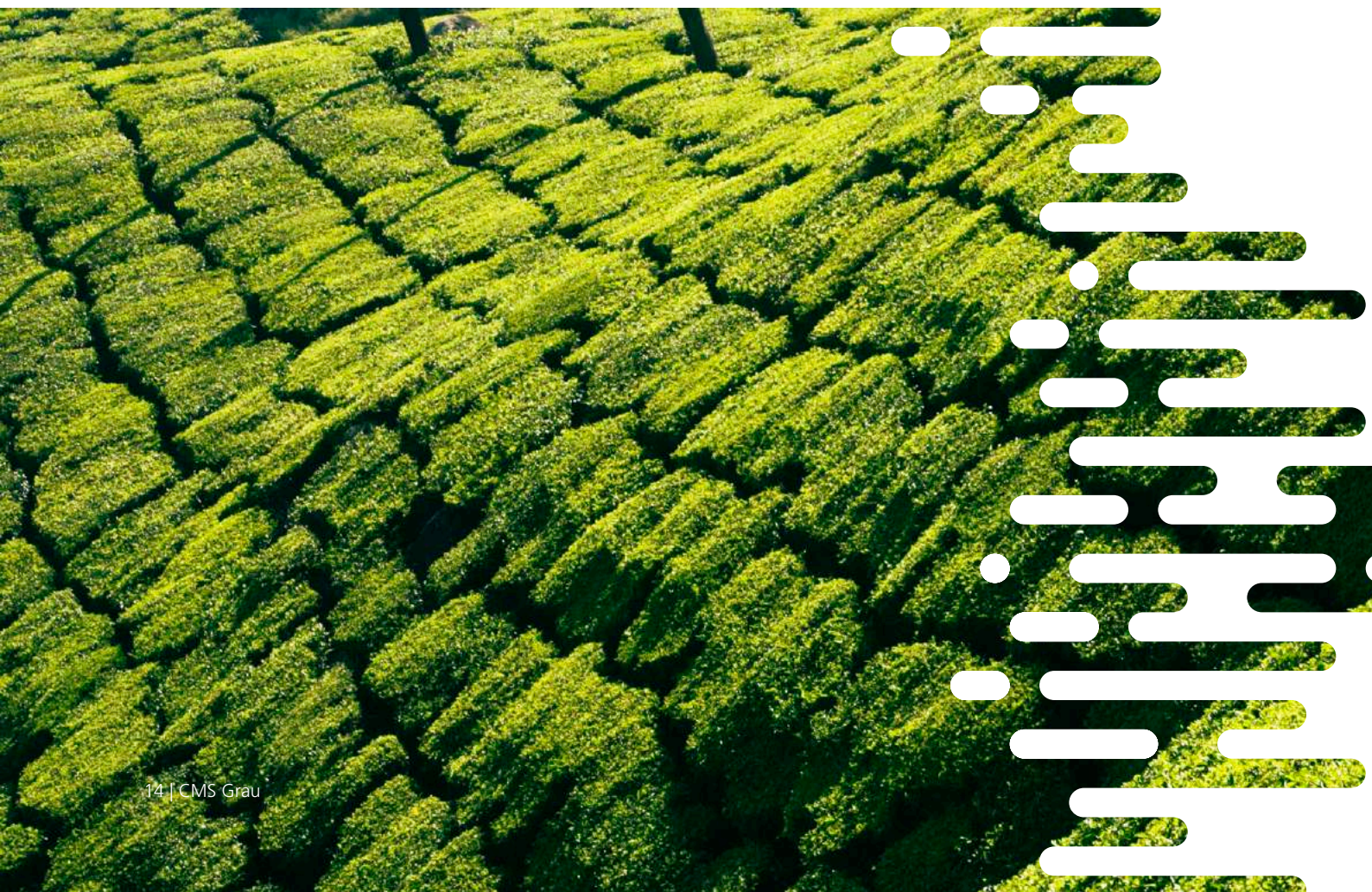
# Doing business, responsibly

## UN Global Compact Signatory

As a signatory of the UN Global Compact, we are developing an overarching environmental, social and governance programme. Being part of this coordinated effort to ensure justice for all, reduce poverty and promote well-being is an integral part of doing business responsibly and we are committed to meet sustainability goals in four areas: human rights, labour, environment and anti-corruption.

## Compliance Policy

CMS Grau is committed to the fight against corruption, money laundering and the financing of terrorism. Under this commitment, our compliance policy represents one of the pillars of our Criminal Compliance Management System, based on the international standard ISO 37001, anti-bribery management systems and Law N°. 30424, Law that regulates administrative responsibility of legal entities.



# Our Team



**Carlos Hamann**  
Energy & Climate Change  
E carlos.hamann@cms-grau.com



**Carolina Cueva**  
Compliance  
E carolina.cueva@cms-grau.com



**Carolina Gajate**  
Real Estate | Hotels & Leisure | TMC  
E carolina.gajate@cms-grau.com



**Cecilia Vargas**  
Labour  
E cecilia.vargas@cms-grau.com



**César Dávila**  
Tax  
E cesar.davila@cms-grau.com



**Eduardo Guevara**  
Energy & Climate Change  
E eduardo.guevara@cms-grau.com



**Franco Soria**  
Real Estate & Construction  
E franco.soria@cms-grau.com



**Giancarlo Villafranqui**  
Infrastructure & Projects  
E giancarlo.villafranqui@cms-grau.com



**Jesús Abanto**  
Energy & Climate Change  
E jesus.abanto@cms-grau.com



**Juan Carlos Escudero**  
Corporate / M&A | Banking & Finance  
E juancarlos.escudero@cms-grau.com



**Juan José Hopkins**  
Corporate / M&A | Banking & Finance | TMC  
E juan jose.hopkins@cms-grau.com



**Julio Vidal**  
Infrastructure & Projects  
E julio.vidal@cms-grau.com



**Karina Urquizo**  
Dispute Resolution  
E karina.urquizo@cms-grau.com



**Kiomi Osorio**  
Corporate / M&A | Banking & Finance  
E kiomi.osorio@cms-grau.com



**Luis Alberto Liñán**  
Dispute Resolution  
E luisalberto.liñan@cms-grau.com



**María Cristina Alva**  
Mining, Natural Resources & Sustainability  
E mariacristina.alva@cms-grau.com



**Maria Delia Oxley**  
Competition | Consumer Products | Intellectual Property  
E mariadelia.oxley@cms-grau.com



**Michelle Barclay**  
Bankruptcy & Restructuring | Corporate / M&A  
E michelle.barclay@cms-grau.com



**Miguel Grau M.**  
Mining, Natural Resources & Sustainability  
E miguel.grau@cms-grau.com



**Miguel Viale**  
Corporate / M&A | Banking & Finance  
E miguel.viale@cms-grau.com



**Néstor Shimabukuro**  
Public Procurement & Administrative Law  
E nestor.shimabukuro@cms-grau.com



**Pedro Pablo Castañeda**  
Real Estate & Construction  
E pedro.castaneda@cms-grau.com



**Ramón Huapaya**  
Public Procurement & Administrative Law  
E ramon.huapaya@cms-grau.com



**Rolando Cevalco**  
Tax  
E rolando.cevasco@cms-grau.com



**Sandra Chicoma**  
Aviation  
E sandra.chicoma@cms-grau.com



**Victor Farro**  
Bankruptcy & Restructuring  
E victor.farro@cms-grau.com



**Vito Verna**  
Environmental Law  
E vito.verna@cms-grau.com

# CMS Law-Now™

**Your free online legal information service.**

A subscription service for legal articles on a variety of topics delivered by email.  
**cms-lawnow.com**

-----  
The information held in this publication is for general purposes and guidance only and does not purport to constitute legal or professional advice.

CMS LTF Limited (CMS LTF) is a company limited by guarantee incorporated in England & Wales (no. 15367752) whose registered office is at Cannon Place, 78 Cannon Street, London EC4N 6AF United Kingdom. CMS LTF coordinates the CMS organisation of independent law firms. CMS LTF provides no client services. Such services are solely provided by CMS LTF's member firms in their respective jurisdictions. CMS LTF and each of its member firms are separate and legally distinct entities, and no such entity has any authority to bind any other. CMS LTF and each member firm are liable only for their own acts or omissions and not those of each other. The brand name "CMS" and the term "firm" are used to refer to some or all of the member firms or their offices; details can be found under "legal information" in the footer of cms.law.

**CMS locations:**

Aberdeen, Abu Dhabi, Amsterdam, Antwerp, Barcelona, Beijing, Belgrade, Bergen, Berlin, Bogotá, Bratislava, Brisbane, Bristol, Brussels, Bucharest, Budapest, Casablanca, Cologne, Cúcuta, Dubai, Dublin, Duesseldorf, Edinburgh, Frankfurt, Funchal, Geneva, Glasgow, Gothenburg, Hamburg, Hong Kong, Istanbul, Johannesburg, Kyiv, Leipzig, Lima, Lisbon, Liverpool, Ljubljana, London, Luanda, Luxembourg, Lyon, Madrid, Manchester, Maputo, Mexico City, Milan, Mombasa, Monaco, Munich, Muscat, Nairobi, Oslo, Paris, Podgorica, Poznan, Prague, Reading, Rio de Janeiro, Riyadh, Rome, Santiago de Chile, São Paulo, Sarajevo, Shanghai, Sheffield, Singapore, Skopje, Sofia, Stavanger, Stockholm, Strasbourg, Stuttgart, Tel Aviv, Tirana, Vienna, Warsaw, Zagreb and Zurich.

-----  
Further information can be found at **cms.law**